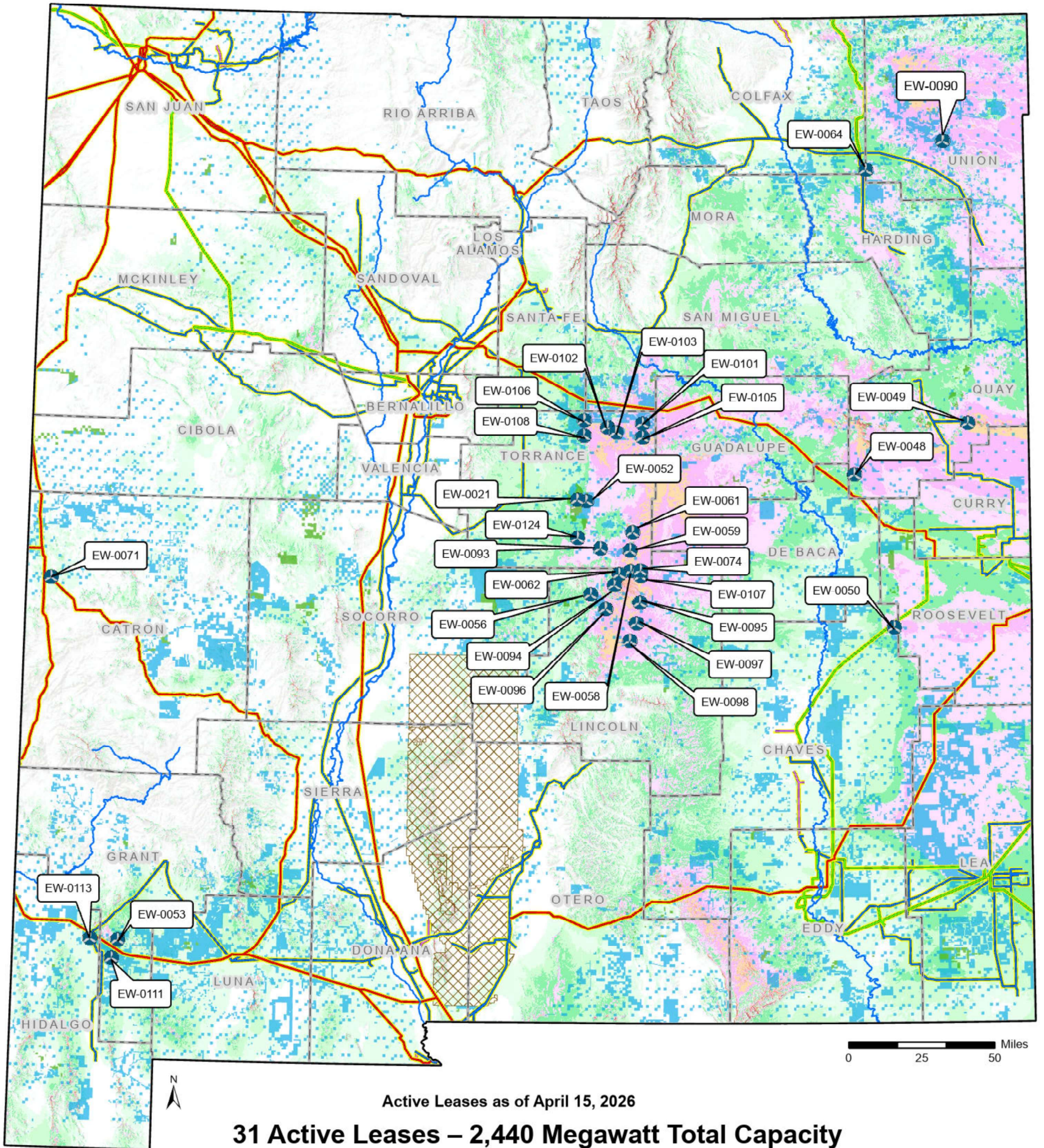


Active Wind Energy Projects on NM State Trust Land



NM State Land Office	Mean Speed at 50 m		Electric Transmission Lines
	mph	m/s	
Wind Leases			
Active	< 12.3	< 5.5	Under 100 Kv
State Trust Lands			100 -161 Kv
Surface Estate	12.3 - 13.4	5.5 - 6.0	220 - 287 Kv
Both Estates	13.4 - 14.5	6.0 - 6.5	345 - 500 Kv
Rivers	14.5 - 15.7	6.5 - 7.0	White Sands Missile Range
	15.7 - 16.8	7.0 - 7.5	
	16.8 - 17.9	7.5 - 8.0	
	17.9 - 19.0	8.0 - 8.5	
	19.0 - 20.1	8.5 - 9.0	
	20.1 - 21.3	9.0 - 9.5	
	> 21.3	> 9.5	



Stephanie Garcia Richard
 Commissioner of Public Lands
 505-827-5761
www.nmstatelands.org

The New Mexico State Land Office assumes no responsibility or liability for, or in connection with, the accuracy, reliability or use of the information provided herein, with respect to State Land Office data or data from other sources. Data pertaining to New Mexico State Trust Lands are provisional and subject to revision, and do not constitute an official record of title. Official records may be reviewed at the New Mexico State Land Office in Santa Fe, New Mexico. Compiled, edited and printed by the Land Office Geographic Information Center. V:\CommercialRenewable_Energy\Pro Projects\Active_Wind_and_Solar_Map\Active_Wind_2026\Active_Wind_04_2026. Save Date: April 15, 2026. Created by: David Barsanti

LONG TERM WIND LEASES ON NEW MEXICO STATE TRUST LAND							
Lease Number	Status as of 04/15/2026	Project Name	Parent Company Name	Lessee Name	County	Acres	Megawatts
EW-0021	Operating	El Cabo Wind	AvanGrid	El Cabo Wind	Torrance	39,363	192
EW-0048	Operating	NM Wind Energy Center	NextEra	New Mexico Wind	Quay	1,160	24
EW-0049	Operating	Caprock Wind	Leeward Renewable Energy	Caprock Wind	Quay	1,840	4
EW-0050	Operating	San Juan Wind	Clearway Energy	San Juan Mesa Wind	Chaves, Roosevelt	4,234	46
EW-0052	Operating	La Joya Wind	AvanGrid	La Joya Wind	Torrance	6,954	37
EW-0053	Initial	Great Divide Wind	Scout Clean Energy	Great Divide Wind	Grant	16,204	100
EW-0056	Initial	SunZia Wind South	Pattern Energy	Mesa Canyons Wind	Lincoln, Torrance	5,217	20
EW-0058	Initial	SunZia Wind South	Pattern Energy	Mesa Canyons Wind	Lincoln	1,028	7
EW-0059	Operating	Tecolote Wind	Pattern Energy	Tecolote Wind	Torrance	5,798	45
EW-0061	Operating	Duran Mesa Wind	Pattern Energy	Duran Mesa Wind	Torrance	1,920	9
EW-0062	Initial	SunZia Wind South	Pattern Energy	Mesa Canyons Wind	Lincoln	2,199	20
EW-0064	Initial	Gladstone Wind	PNE AG	Gladstone New Energy	Colfax and Union	7,636	31
EW-0071	Operating	Borderlands Wind	NextEra	Borderlands Wind	Catron	642	6
EW-0074	Operating	Red Cloud Wind	Pattern Energy	Red Cloud Wind	Lincoln	2,283	6
EW-0090	Initial	Spinneret	Spinneret Wind Energy	Invenergy LLC.	Union	23,924	200
EW-0093	Initial	SunZia Wind South	Pattern Energy	Mesa Canyons Wind	Torrance	7,698	61
EW-0094	Initial	SunZia Wind South	Pattern Energy	Mesa Canyons Wind	Lincoln	7,468	54
EW-0095	Initial	SunZia Wind South	Pattern Energy	Mesa Canyons Wind	Lincoln	3,760	14
EW-0096	Initial	SunZia Wind South	Pattern Energy	Mesa Canyons Wind	Lincoln	17,534	133
EW-0097	Initial	SunZia Wind South	Pattern Energy	Mesa Canyons Wind	Lincoln	7,663	65
EW-0098	Initial	SunZia Wind South	Pattern Energy	Mesa Canyons Wind	Lincoln	3,521	14
EW-0101	Initial	SunZia Wind North	Pattern Energy	El Corazon Wind	Torrance & San Miguel	22,138	31
EW-0102	Initial	SunZia Wind North	Pattern Energy	El Corazon Wind	Torrance	9,828	68
EW-0103	Initial	SunZia Wind North	Pattern Energy	El Corazon Wind	Torrance	3,828	68
EW-0105	Initial	SunZia Wind North	Pattern Energy	El Corazon Wind	Torrance	7,365	44
EW-0106	Initial	SunZia Wind North	Pattern Energy	El Corazon Wind	Torrance & San Miguel	56,681	374
EW-0107	Initial	SunZia Wind South	Pattern Energy	Mesa Canyons Wind	Lincoln	2,318	27
EW-0108	Initial	SunZia Wind North	Pattern Energy	El Corazon Wind	Torrance	13,370	58
EW-0111	Initial	Silver Stallion	EDF Renewables	Silver Stallion Wind, LLC	Grant County	23,840	400
EW-0113	Initial	Hidalgo Wind	Innergex	Innergex Renewable Development USA, LLC	Hidalgo County	12,192	150
EW-0124	Initial	Cedarvail Wind Project	MMR Group/Southwestern Power	Agua Fria Energy	Torrance	10,179	1134
					Overall Total	329,785	3,440
					Shaded cells above indicate estimates		