

NMSLO Public Meetings



RioSol
CLEAN ENERGY TRANSMISSION



New Mexico Tech Macey Center, Socorro, NM

February 18, 2025, 6:00 PM

Train Station Auditorium, Los Lunas, NM

February 24, 2025, 6:00 PM

Deming City Council Chambers, Deming, NM

February 26, 2025, 6:00 PM

Agenda

I. Introduction – NMSLO Staff

II. RioSol Project Update

III. NMSLO Right of Way Grant

IV. Public Comment

New Mexico State Land Office



About the New Mexico State Land Office

- The State Land Office's mission is to care for 9 million surface acres and 13 million mineral acres of state trust lands while earning money for New Mexico's public schools and other institutions.
- Since 2019, the State Land Office has earned over \$11 billion for our beneficiaries.

Public Meetings and State Trust Lands

- **Senate Bill 458, which passed in the 2019 Legislative Session, *mandates* that the State Land Office notice and conduct public meetings in the communities of impact on such proposals as: land sales or exchanges, large transmission lines and other impactful developments.**

Protections for Public Safety and Environment

The NMSLO has added voluntary protections to help ensure public safety and protection of trust resources through Best Management Practices (BMPs) for ground disturbing activities on state trust land, including transmission development.

The BMPs emphasize the need for applicants to minimize surface disturbance in the design, construction, maintenance, remediation, reclamation and restoration of their projects on state trust lands.

Examples of specific practices highlighted in the BMPs include, but are not limited to,

1. Minimum setbacks from streams or water courses,
2. No siting of structures within a wetland,
3. Placement of erosion control features to minimize drainage disruptions,
4. Siting roads along natural contours and limiting slope,
5. Maintaining an undisturbed vegetative barrier, and
6. Specification of seed mixtures to control invasive species and promote native flora.

RioSol Project Participants



RioSol is part of the largest clean energy infrastructure project in U.S. History. RioSol parallels SunZia and received federal approvals along with SunZia following the finalization of an Environmental Impact Statement. The two separately owned transmission lines will largely traverse the same 550 miles between central New Mexico and Central Arizona. RioSol is a 500-kV Alternating Current project that allows for intermediate interconnections to serve utilities and communities in New Mexico and Arizona. <https://riosol.energy>



Southwestern Power Group (SWPG) is an independent developer of utility-scale generation and transmission assets, with a market focus in the desert Southwest. Since 2000, the company has distinguished itself as a leading force in evolving energy markets, including renewable energy, storage and smart electrical grids. SWPG is comprised of a select, experienced group of individuals with decades of experience in finance, permitting, licensing, real estate, construction and operations. www.southwesternpower.com



MMR is a global infrastructure firm with more than 8,000 full-time employees in the U.S. and a reputation for completing domestic and global projects within budget, on time and with unwavering consideration for safety. Across the globe, MMR has served clients in the renewable energy, chemical and petrochemical, oil and gas, industrial manufacturing, power generation and power development markets. www.mmrgrp.com



The New Mexico Renewable Transmission Authority (RETA) is a state government entity established to identify and develop transmission and to enable renewable energy in New Mexico. RETA partnered with MMR and SWPG to facilitate RioSol as a benefit to the grid, and is now a co-developer of these projects. www.nmreta.com

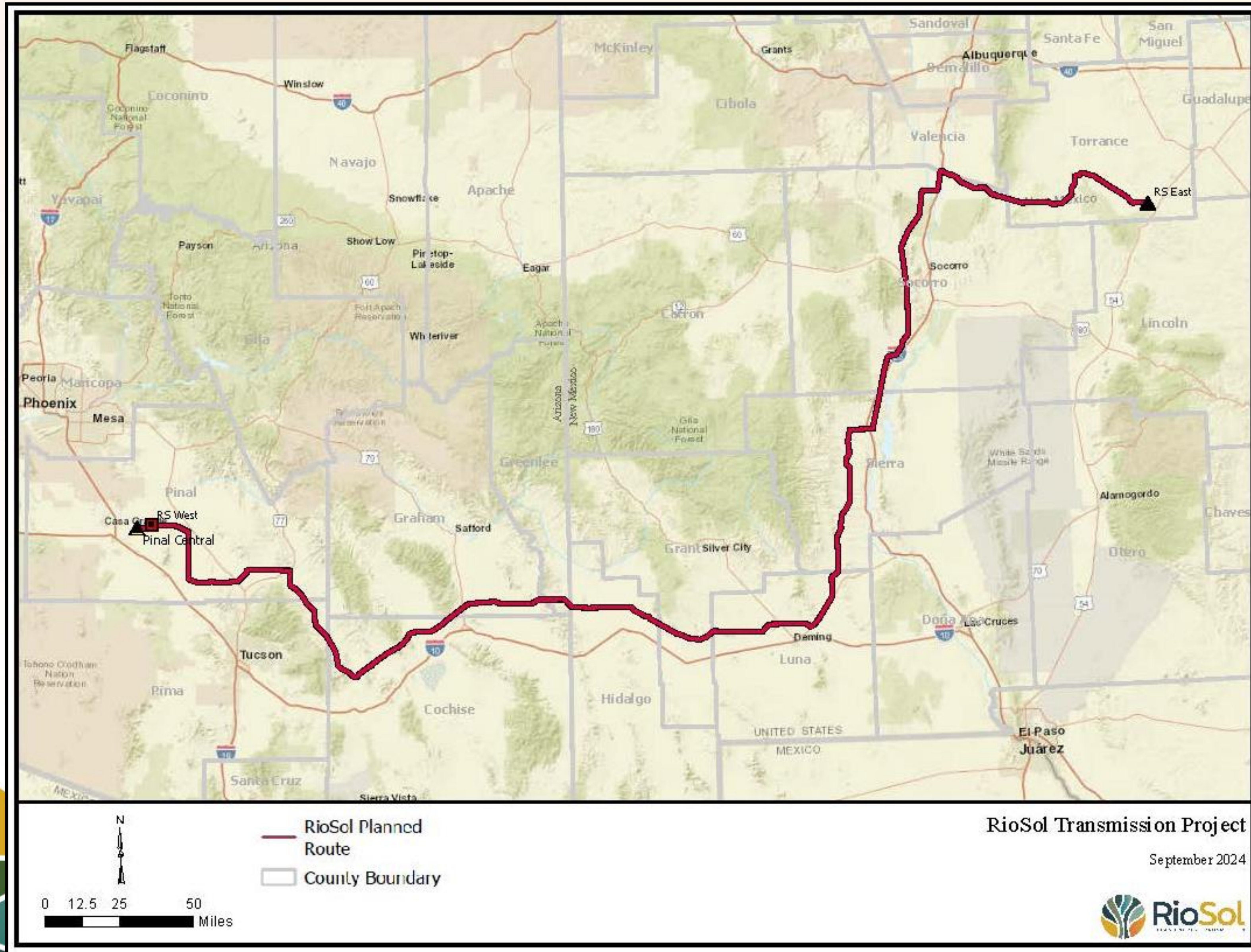
RioSol Background

- Starting in 2008, SWPG permitted SunZia as two 500kV lines
- In 2022, Pattern Energy bought the rights to the first SunZia line
- The second SunZia line continues to be owned by SWPG and was renamed, RioSol

RioSol Background, cont.

- 500kV High Voltage Alternating Current (HVAC) transmission line
- Permits considered a phased construction approach whereby the first line would be built prior to the second
- Start of construction is targeted for late 2026 with an in-service date during late 2028

RioSol Route



- RioSol is a 550-mile line across Arizona counties Pinal, Pima, Graham, Greenlee and Cochise and New Mexico counties Socorro, Sierra, Luna, Grant, Hidalgo and Torrance
- A 500kV AC line that allows for renewable energy generated in Arizona and New Mexico to be available for local communities
- Approximately 5 planned substations in Arizona and New Mexico will allow delivery to multiple communities along the line route
- AZ and NM utilities have expressed interest to interconnect with RioSol

RioSol Summary Schedule

2025-2026

- Class III Cultural Surveys
- Biological Surveys
- Paleo Surveys
- CWA Section 404 Permits
- Final Engineering and Design
- Plan of Development for BLM & USFWS approval
- 99% Private ROW acquired
- Pending ROW Applications with AZ & NM state land
- Open Solicitation of RioSol Transmission Capacity to energy customers

Late 2026

- Target Start of Construction

Late 2028

- Target In-Service

New Mexico Renewable Energy Transmission Authority

Why Was RETA Formed and What Does It Do?

- New Mexico has some of the most extensive and valuable wind and solar resources in the United States; but has little transmission infrastructure or capacity to access them.
- The New Mexico Renewable Energy Transmission Authority (RETA) was formed to help develop transmission and energy storage to cultivate this unique opportunity.
- RETA was established by the New Mexico State Legislature in 2007 to plan, finance, develop and acquire high-voltage transmission lines and storage projects to promote economic development in New Mexico.
- RETA-sponsored projects must transmit at least 30% of their power from renewable resources. Most of RETA's current projects are planned to carry 100% of their power from renewable resources.
- RETA is working with developers to deliver clean electricity from wind and solar resources to both in-state and export markets.

What is RETA's Function?

- RETA is an essential link in supporting New Mexico's Energy Transition Act (ETA), which requires 100% zero-carbon electricity for utilities by 2045 and rural electric cooperatives by 2050.
- The amount of renewable energy that could be generated significantly surpasses the needs within New Mexico but, unfortunately, there are not enough existing transmission lines to move this energy to locations where it can be used.
- The ETA drives the development of ~4,000 Mega-Watts of renewables by 2030, but renewable growth to 11,500 MW is possible by building new transmission accessing local and regional markets of Western states.
- New Mexico and other western states are experiencing rapid load growth due to the electrification of gas and oil production, the growth of data centers, and increases in the electric car market.
- The renewable resources are in New Mexico. We are working to fulfill this growing demand for electricity by assisting with the development of new transmission infrastructure.

RETA and RioSol Joint Development Partners

- RETA and RioSol are co-development partners.
- The Lease Agreement between RETA and RioSol was effective as of 7/15/2022.
- Both the New Mexico Renewable Energy Transmission Authority (“RETA”) and El Rio Sol Transmission, LLC (“Rio Sol”) will be named as “Grantees” included in the Right of Way Grant issued by the State of New Mexico, acting through the Commissioner of Public Lands.



Summary of RioSol NMSLO Applications

- **RE-6257 Right of Entry (Renewed Annually)**
 - Non-Ground Disturbance Activities for on going field work
- **R41715 RioSol Transmission Line Right of Way**
 - 250 foot Right of Way (generally runs parallel to SunZia Transmission)
 - Linear Miles: 96.25
 - Total Acreage: 2919
- **R42125 RioSol Permanent Access to Right of Way**
 - Shared Road Use Agreement with SunZia Transmission
 - Linear Miles: 232.08

Summary of Commercial Terms

Payments during Development Period – 2 Years

- **Paid upon Execution of ROW Grant** **\$550,000**
- **Paid by December 31, 2026** **\$550,000**

Construction & Operating Term Lease Payments – 48 Years

Annual Right of Way Payment:

\$200 per acre, escalating annually at 3.3%, initial payment \$583,816.60 for 48 years

Additional Lump Sum Payments:

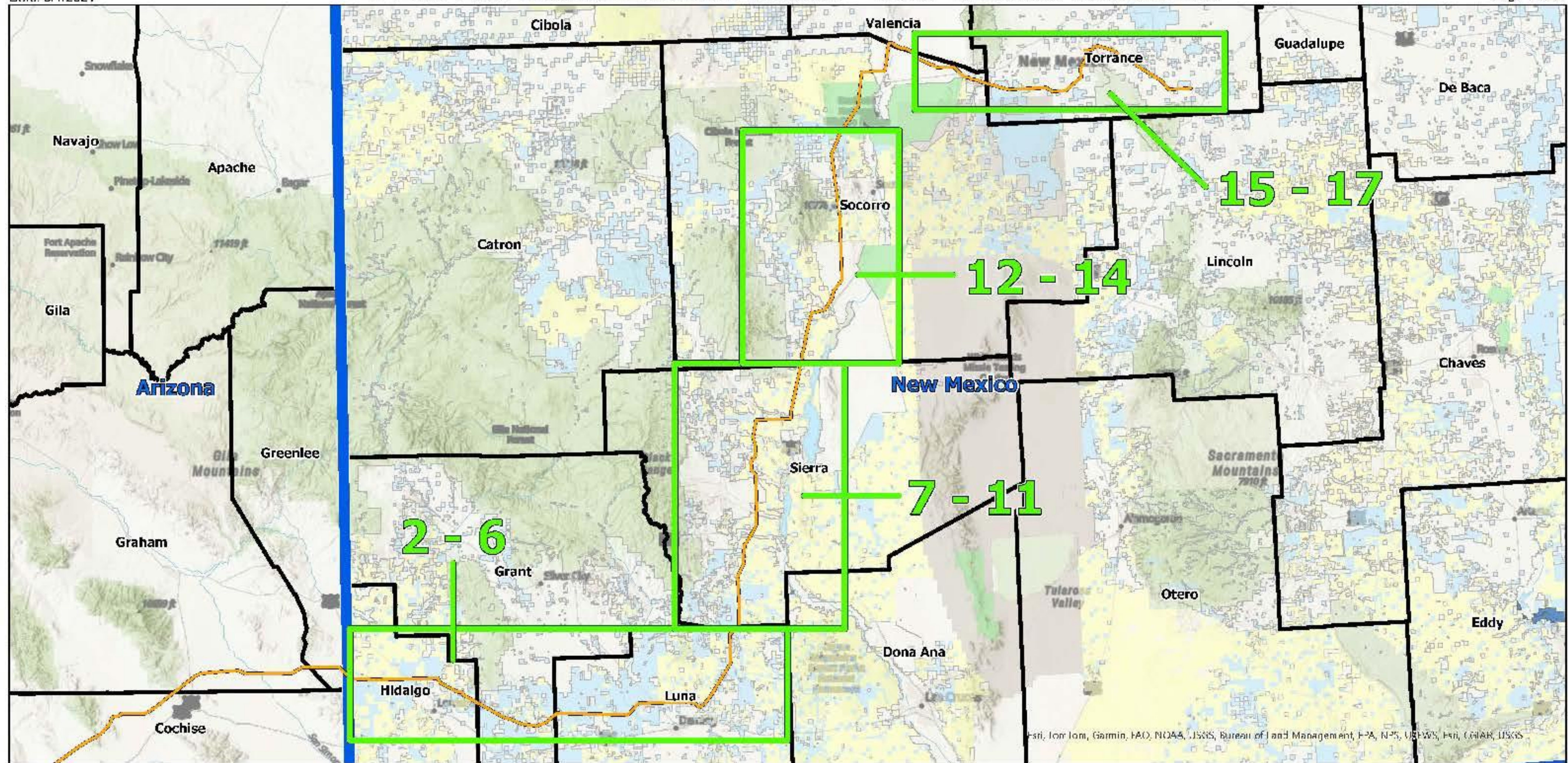
Year	Payment
2035	\$375,000
2045	\$375,000
2055	\$375,000
2065	\$375,000

Decommissioning Term – 2 Years

Year	Payment
2075	\$5,000
2076	\$5,000

Supplemental Maps

El Rio Sol Transmission Route - New Mexico Overview



**El Rio Sol
Transmission,
LLC Project**



Project Features

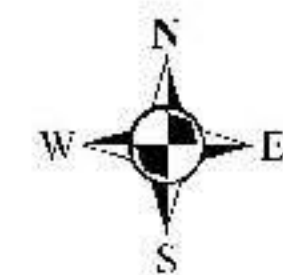
- Centerline
- Right-of-way

Land Ownership

- BLM Land
- BOR
- USFWS Land
- Private Land

Geographic Boundaries

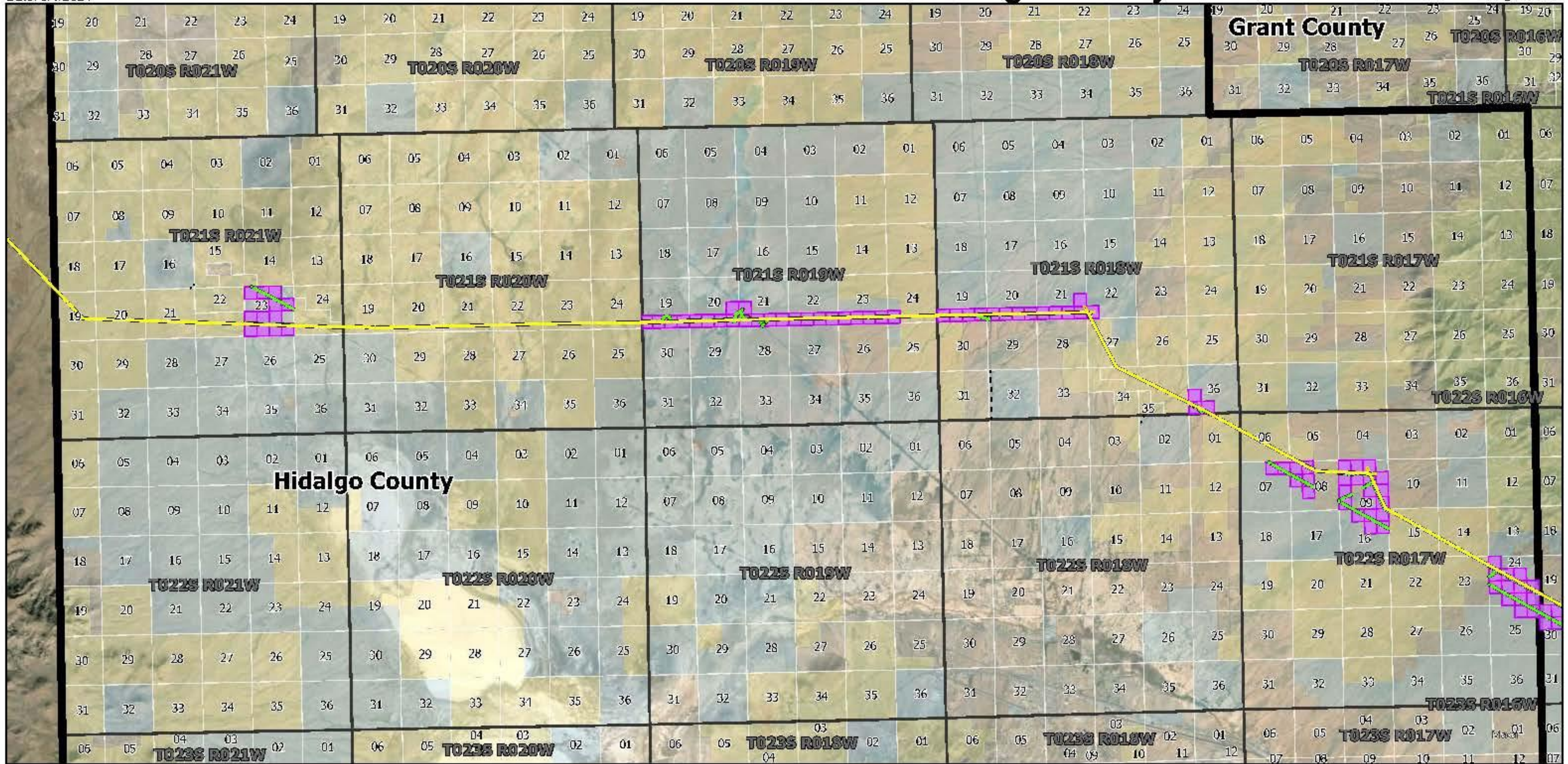
- County Boundary
- State Boundary



El Rio Sol Transmission Route - Hidalgo County

Date: 3/1/2024

Page 2 of 17



**El Rio Sol
Transmission,
LLC Project**



Project Features

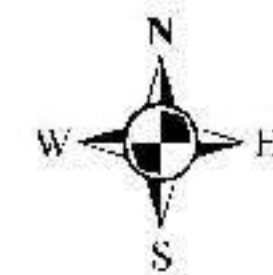
- ERS Centerline
- Construction Yard
- Access Plan
- Non-Public Road
- Public Road

Land Ownership

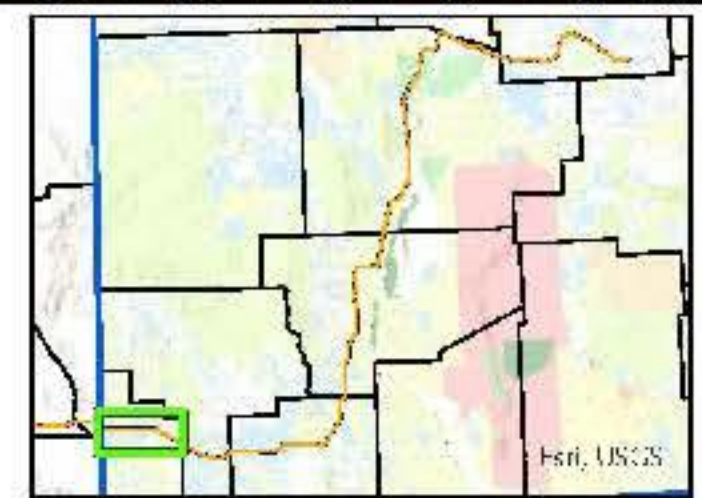
- BLM Land
- USFS Land
- Private Land
- State Land

Geographic Boundaries

- Section Boundary
- NMSLO Aliquot
- Township Boundary
- County Boundary



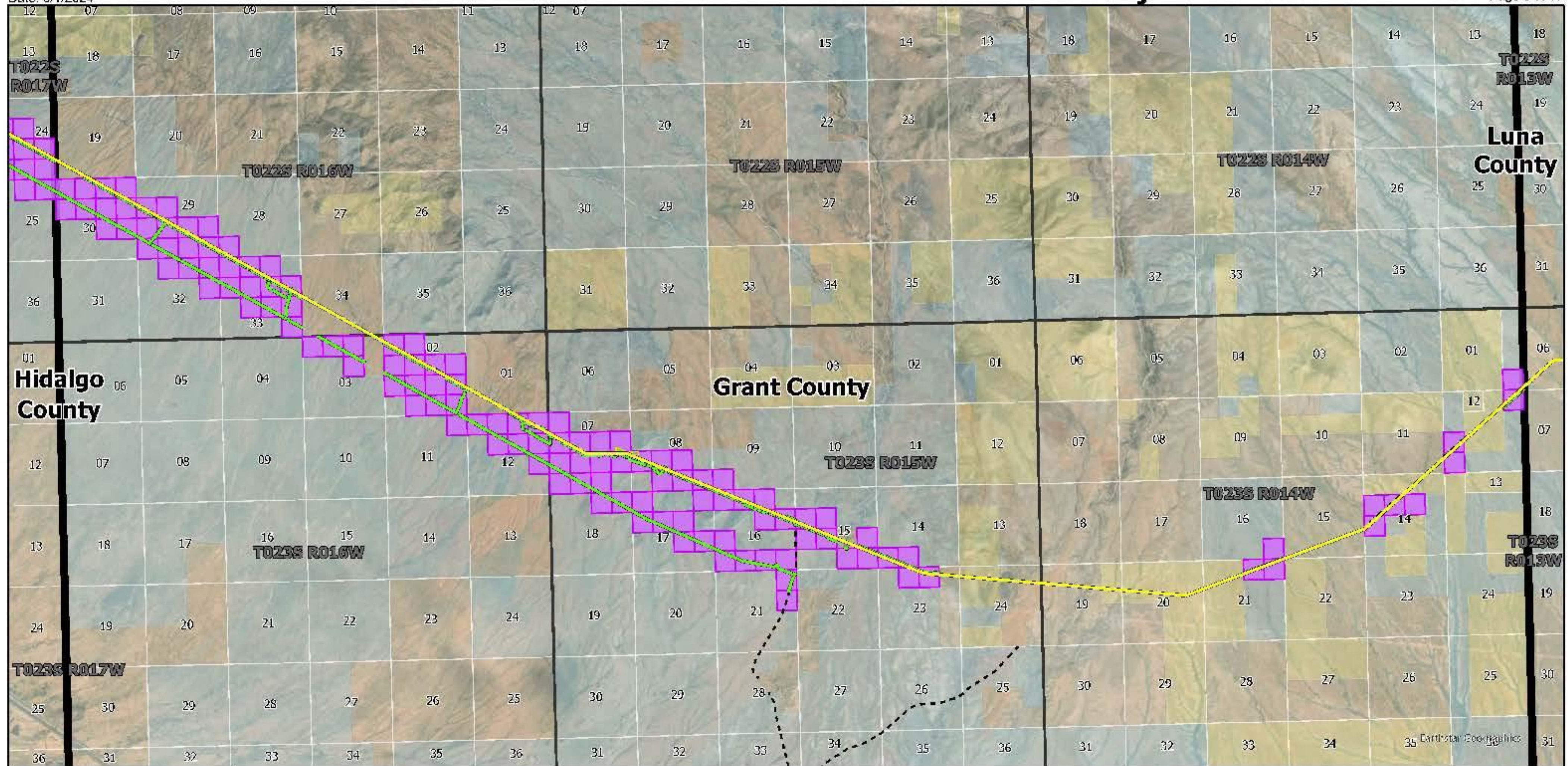
0 1 2 4 Miles




El Rio Sol Transmission Route - Grant County

Date: 3/1/2024

Page 3 of 17



El Rio Sol Transmission, LLC Project



Project Features

- ERS Centerline

Access Plan

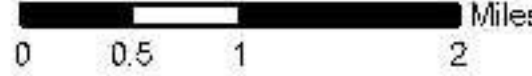

- Non-Public Road
- Public Road


Land Ownership

- BLM Land
- USFS Land
- Private Land
- State Land

Geographic Boundaries

- Section Boundary
- NMSLO Aliquot
- Township Boundary
- County Boundary





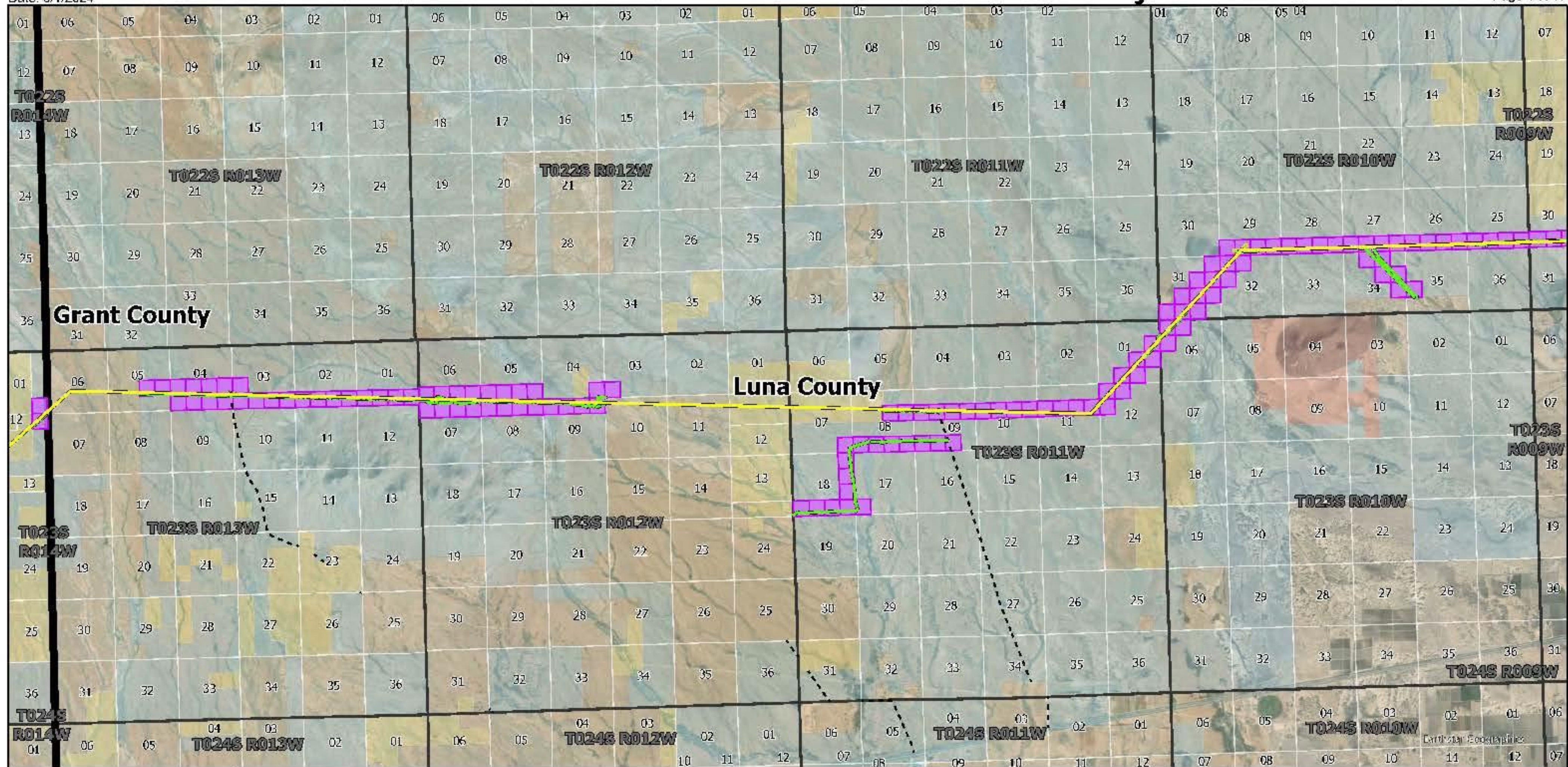
Peri, USGS



El Rio Sol Transmission Route - Luna County

Date: 3/1/2024

Page 4 of 17



**El Rio Sol
Transmission,
LLC Project**



Project Features

ERS Centerline

Access Plan

Non-Public Road

Public Road

Land Ownership

BLM Land

DOD Land

Private Land

State Land

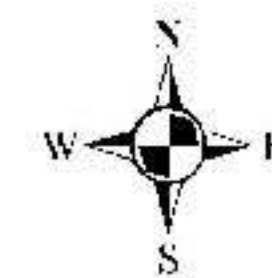
Geographic Boundaries

Section Boundary

NMSLO Aliquot

Township Boundary

County Boundary



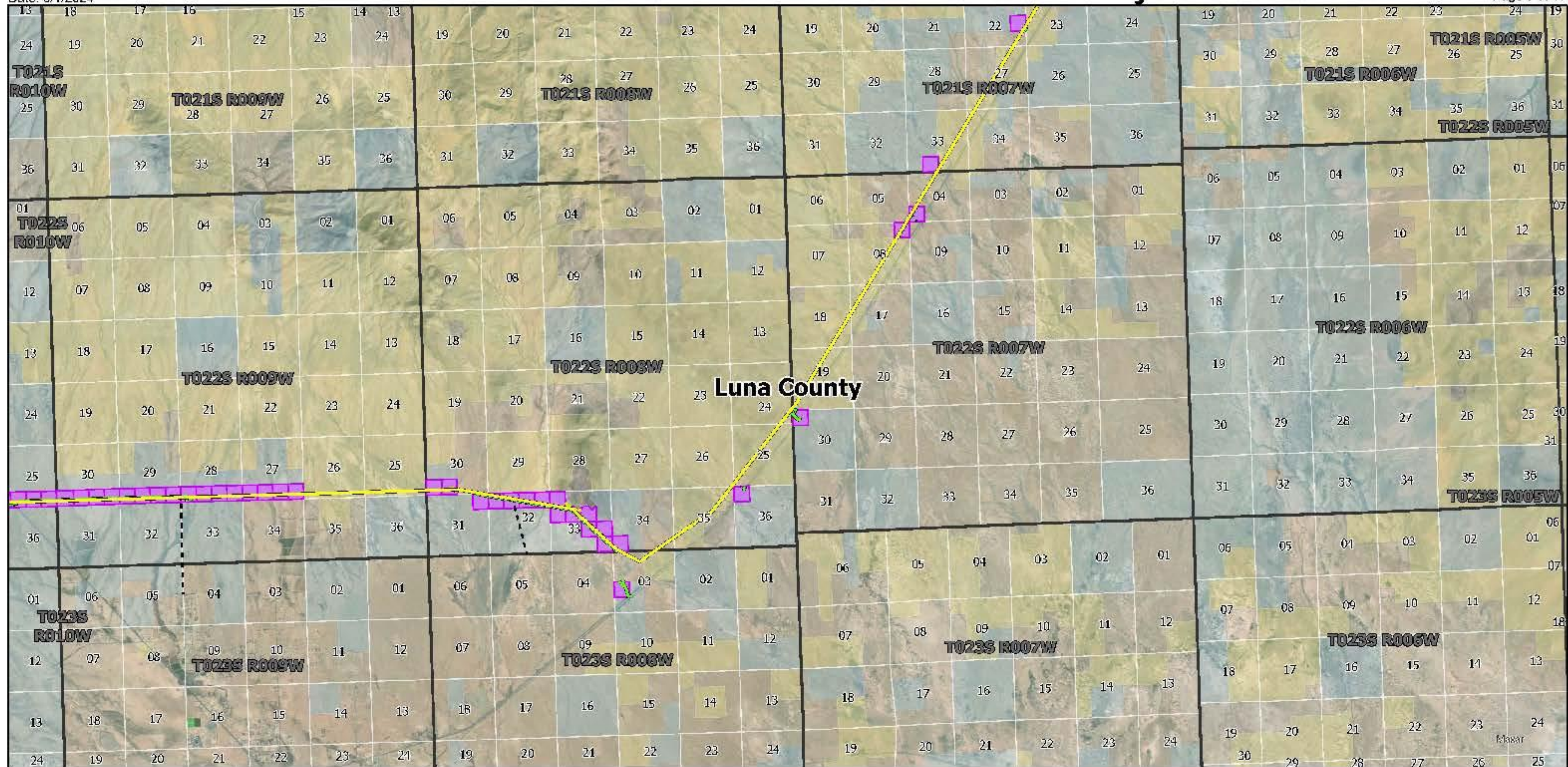
0 0.75 1.5 3 Miles



El Rio Sol Transmission Route - Luna County

Date: 3/1/2024

Page 5 of 17



**El Rio Sol
Transmission,
LLC Project**



Project Features

— ERS Centerline

Access Plan

— Non-Public Road

----- Public Road

Land Ownership

BLM Land

Private Land

State Land

Geographic Boundaries

Section Boundary

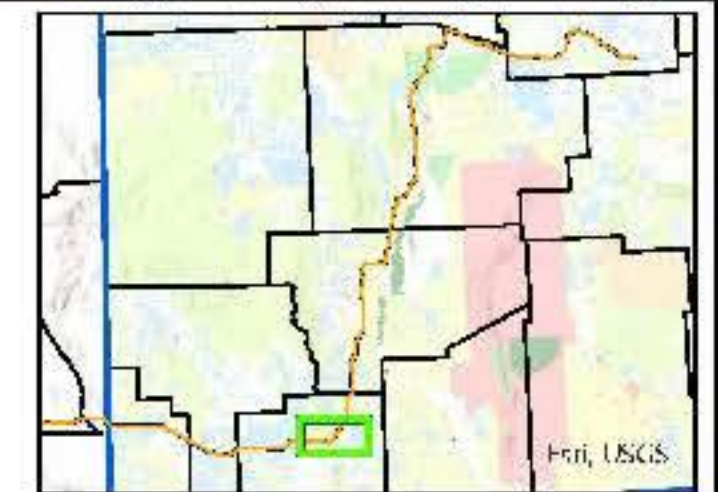
NMSLO Aliquot

Township Boundary

County Boundary



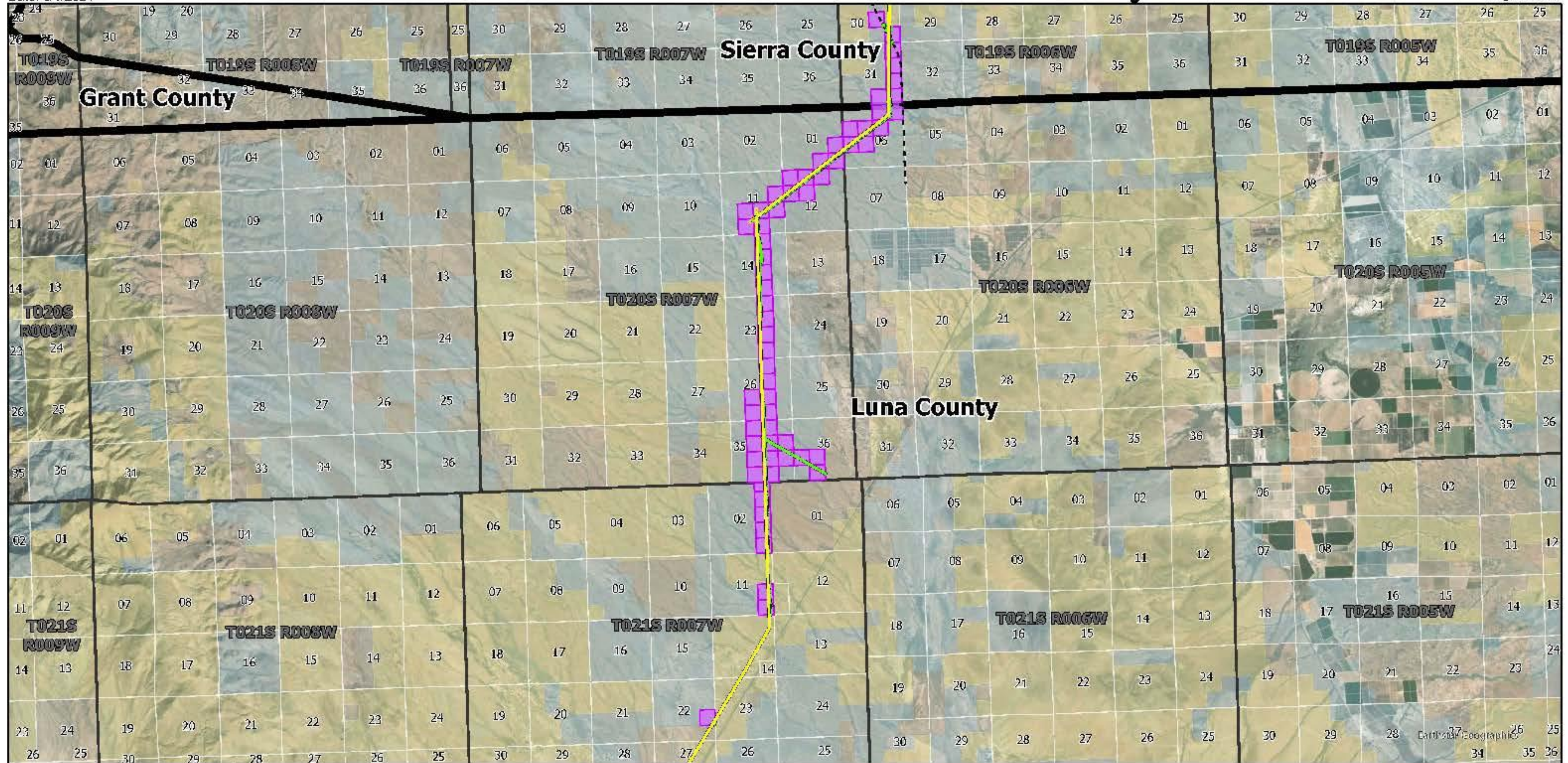
0 0.75 1.5 3 Miles



El Rio Sol Transmission Route - Luna County

Date: 3/1/2024

Page 6 of 17



**El Rio Sol
Transmission,
LLC Project**



Project Features

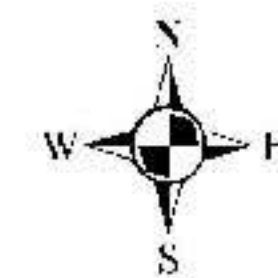
- ERS Centerline
- Access Plan
- Non-Public Road
- Public Road

Land Ownership

- BLM Land
- Private Land
- State Land

Geographic Boundaries

- Section Boundary
- NMSLO Aliquot
- Township Boundary
- County Boundary



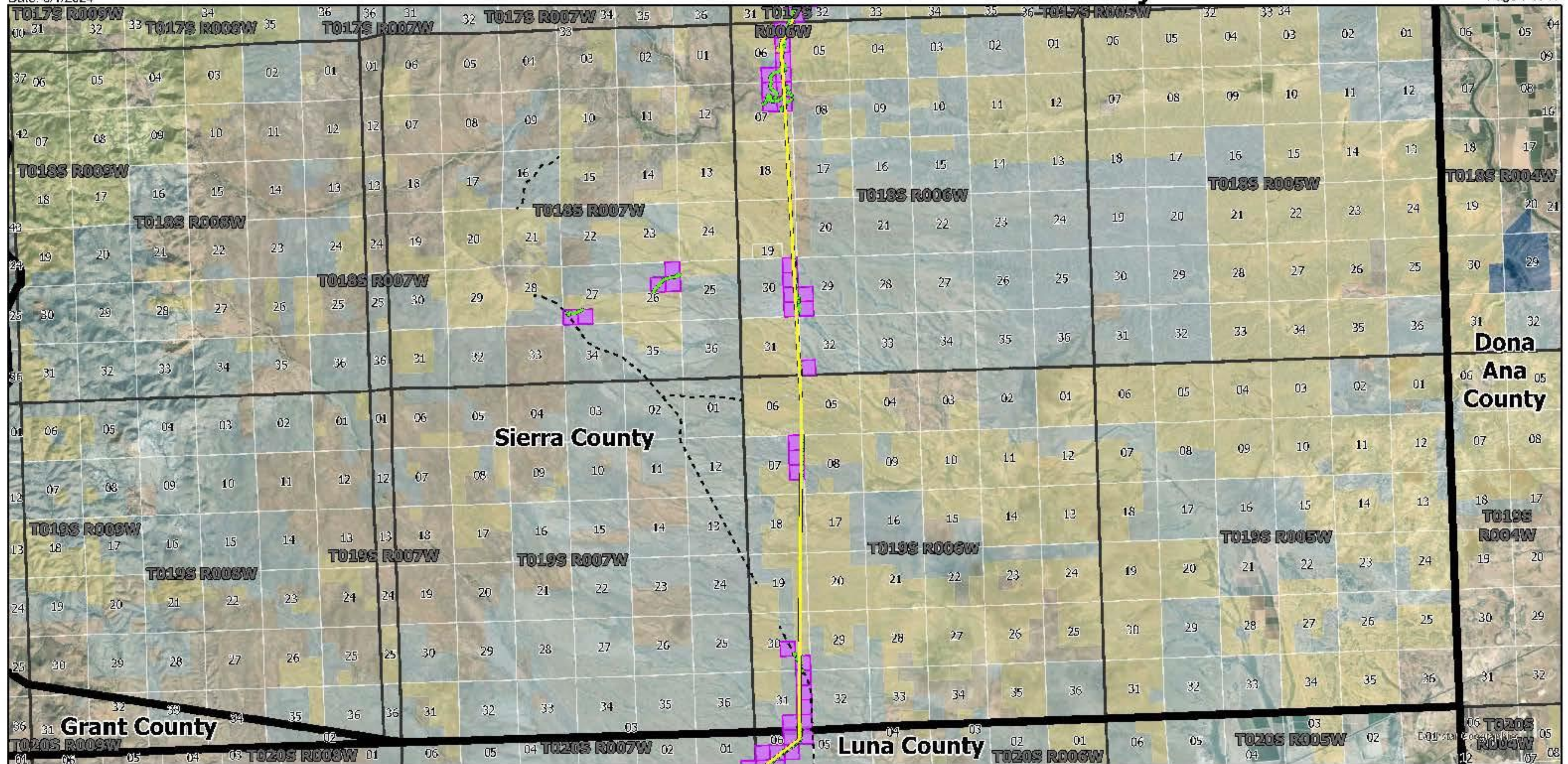
0 0.75 1.5 3 Miles



El Rio Sol Transmission Route - Sierra County

Date: 3/1/2024

Page 7 of 17



**El Rio Sol
Transmission,
LLC Project**



Project Features

- ERS Centerline
- Access Plan
- Non-Public Road
- Public Road

Land Ownership

- BLM Land
- BOR Land
- USFS Land
- Private Land
- State Land

Geographic Boundaries

- Section Boundary
- NMSLO Aliquot
- Township Boundary
- County Boundary



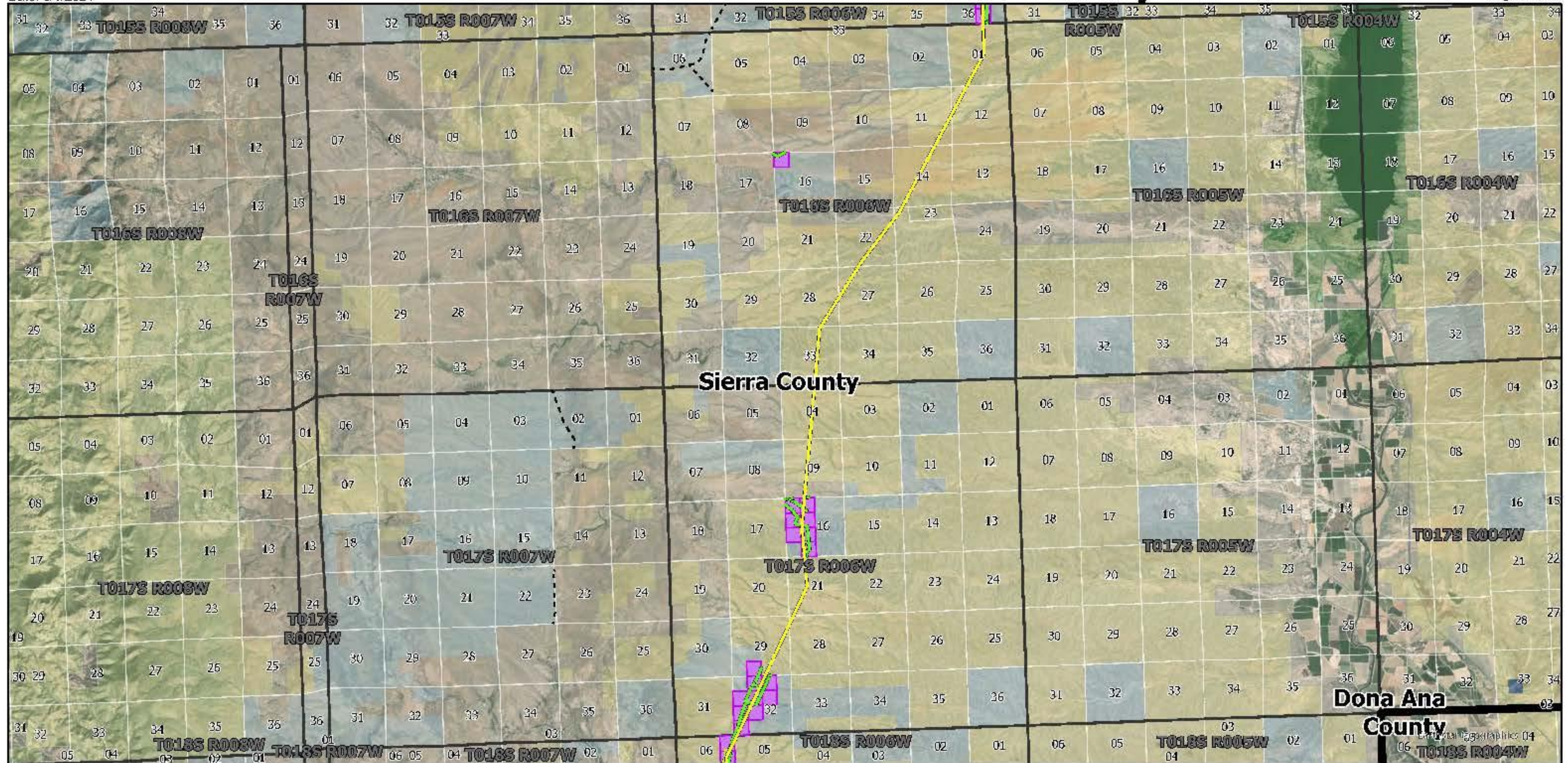
0 0.75 1.5 3 Miles



El Rio Sol Transmission Route - Sierra County

Date: 3/1/2024

Page 8 of 17



El Rio Sol Transmission, LLC Project



Project Features

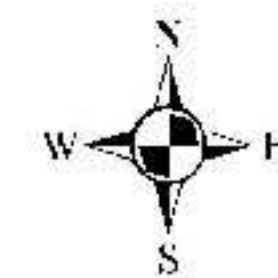
- ERS Centerline
- Non-Public Road
- Public Road

Land Ownership

- BLM Land
- BOR Land
- USFS Land
- Private Land
- State Land

Geographic Boundaries

- Section Boundary
- NMSLO Aliquot
- Township Boundary
- County Boundary



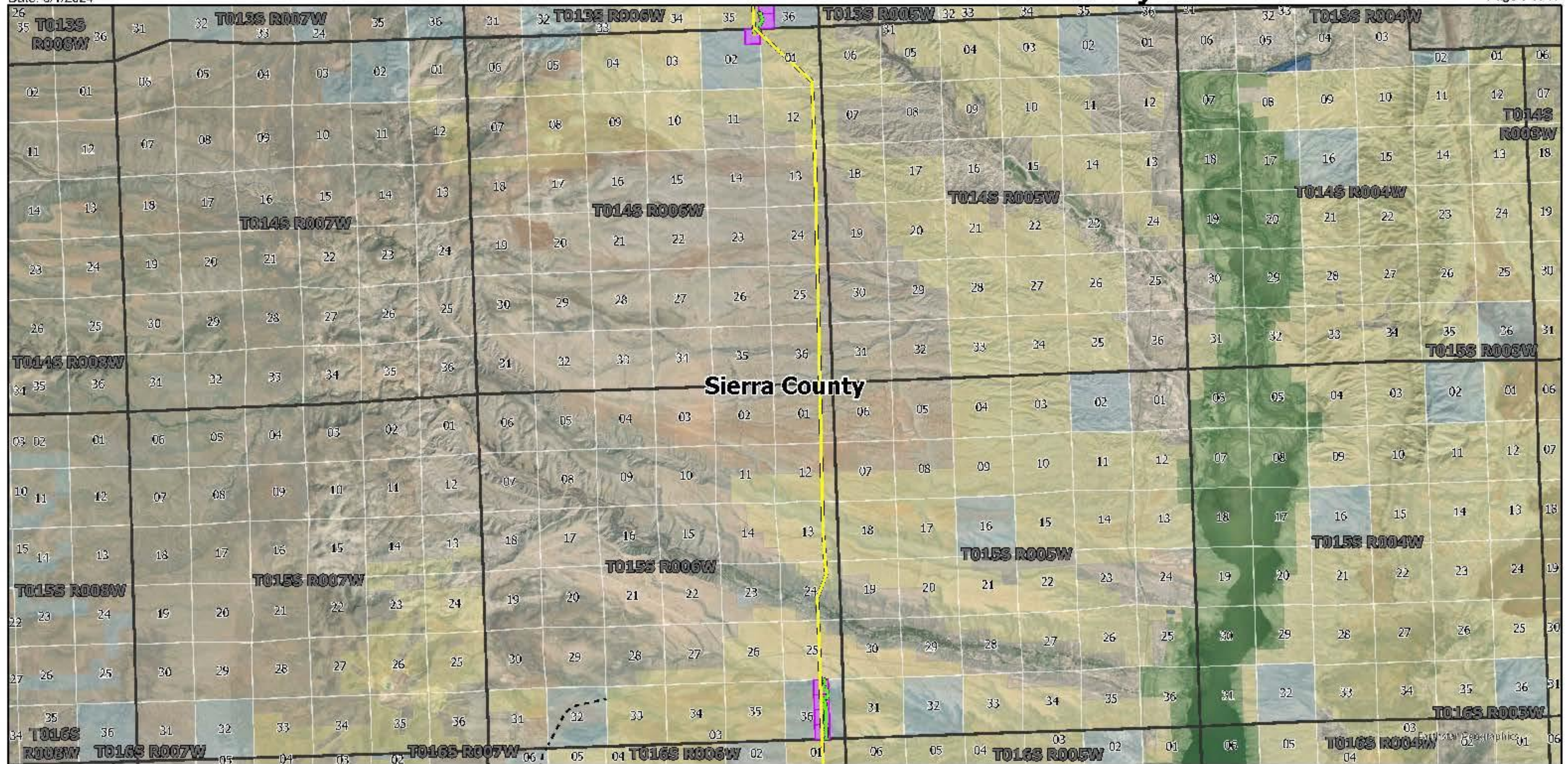
0 0.75 1.5 3 Miles



El Rio Sol Transmission Route - Sierra County

Date: 3/1/2024

Page 9 of 17



El Rio Sol Transmission, LLC Project



Project Features

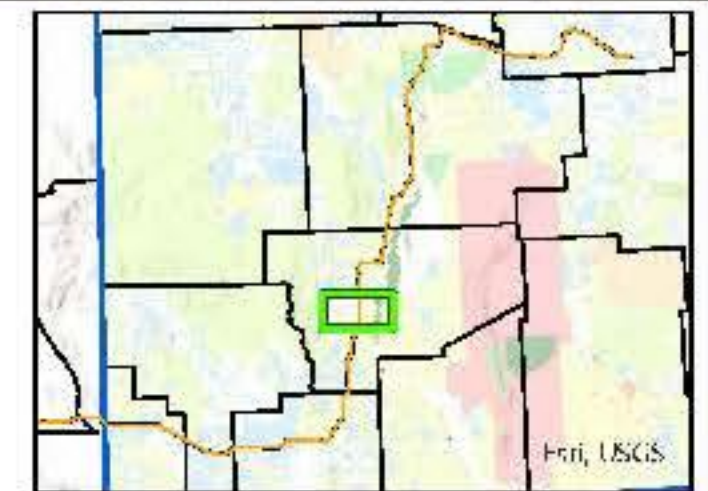
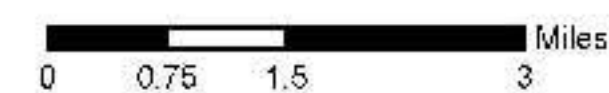
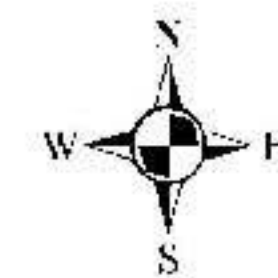
- ERS Centerline
- Access Plan
- Non-Public Road
- Public Road

Land Ownership

- BLM Land
- BOR Land
- Private Land
- State Land
- State Park Land

Geographic Boundaries

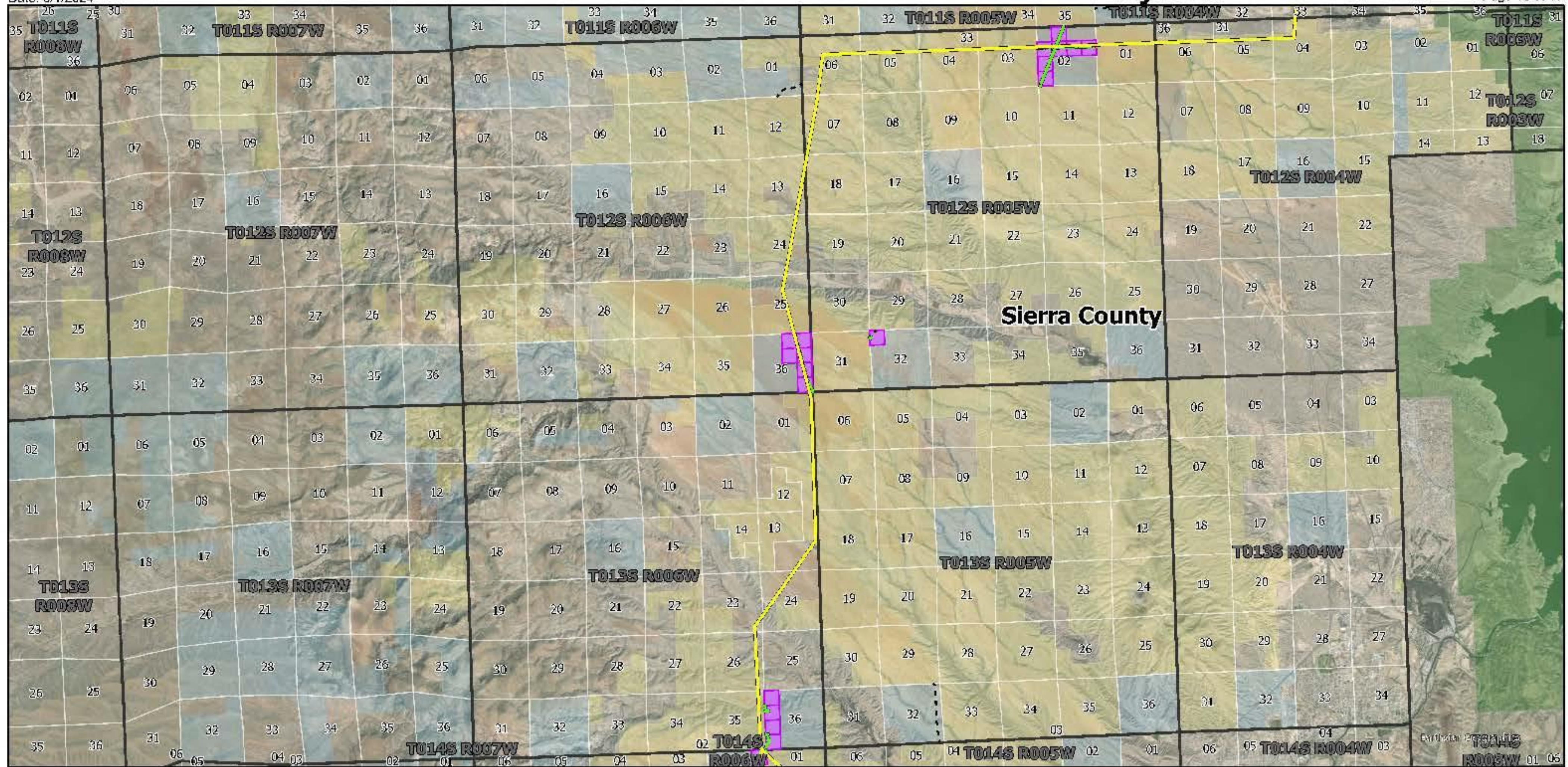
- Section Boundary
- NMSLO Aliquot
- Township Boundary
- County Boundary



El Rio Sol Transmission Route - Sierra County

Date: 3/1/2024

Page 10 of 17



El Rio Sol Transmission, LLC Project



Project Features

— ERS Centerline

Access Plan

— Non-Public Road

..... Public Road

Land Ownership

BLM Land

Private Land

State Land

State Park Land

Geographic Boundaries

Section Boundary

NMSLO Aliquot

Township Boundary

County Boundary



0 0.75 1.5 3 Miles

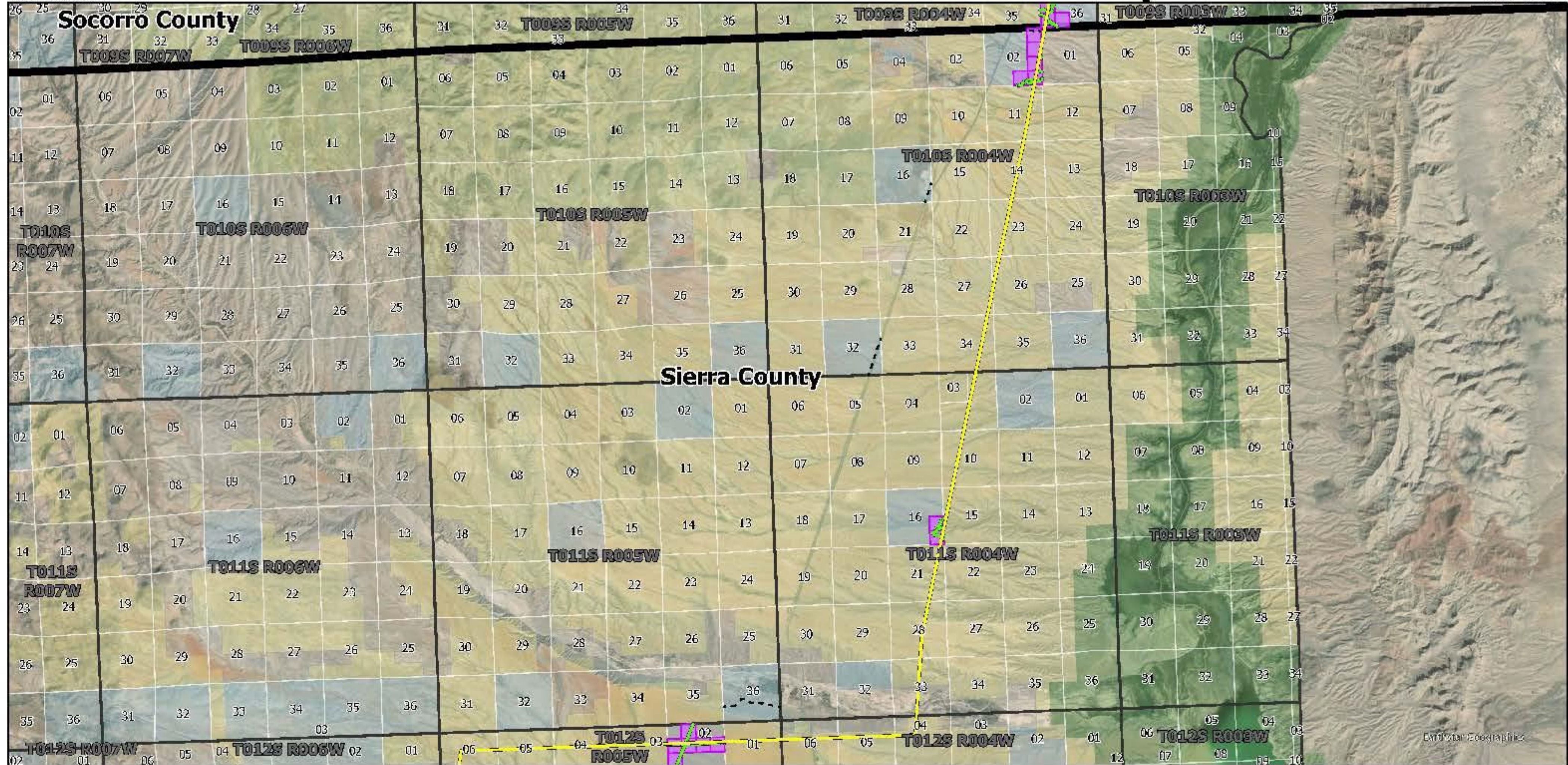


Peri, USCIS

El Rio Sol Transmission Route - Sierra County

Date: 3/1/2024

Page 11 of 17



**El Rio Sol
Transmission,
LLC Project**



Project Features

— ERS Centerline

Access Plan

— Non-Public Road

..... Public Road

Land Ownership

BLM Land

USFS Land

Private Land

State Land

State Park Land

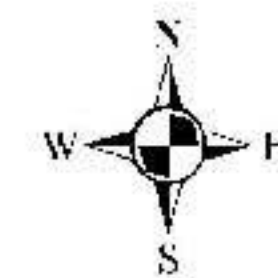
Geographic Boundaries

Section Boundary

NMSLO Aliquot

Township Boundary

County Boundary



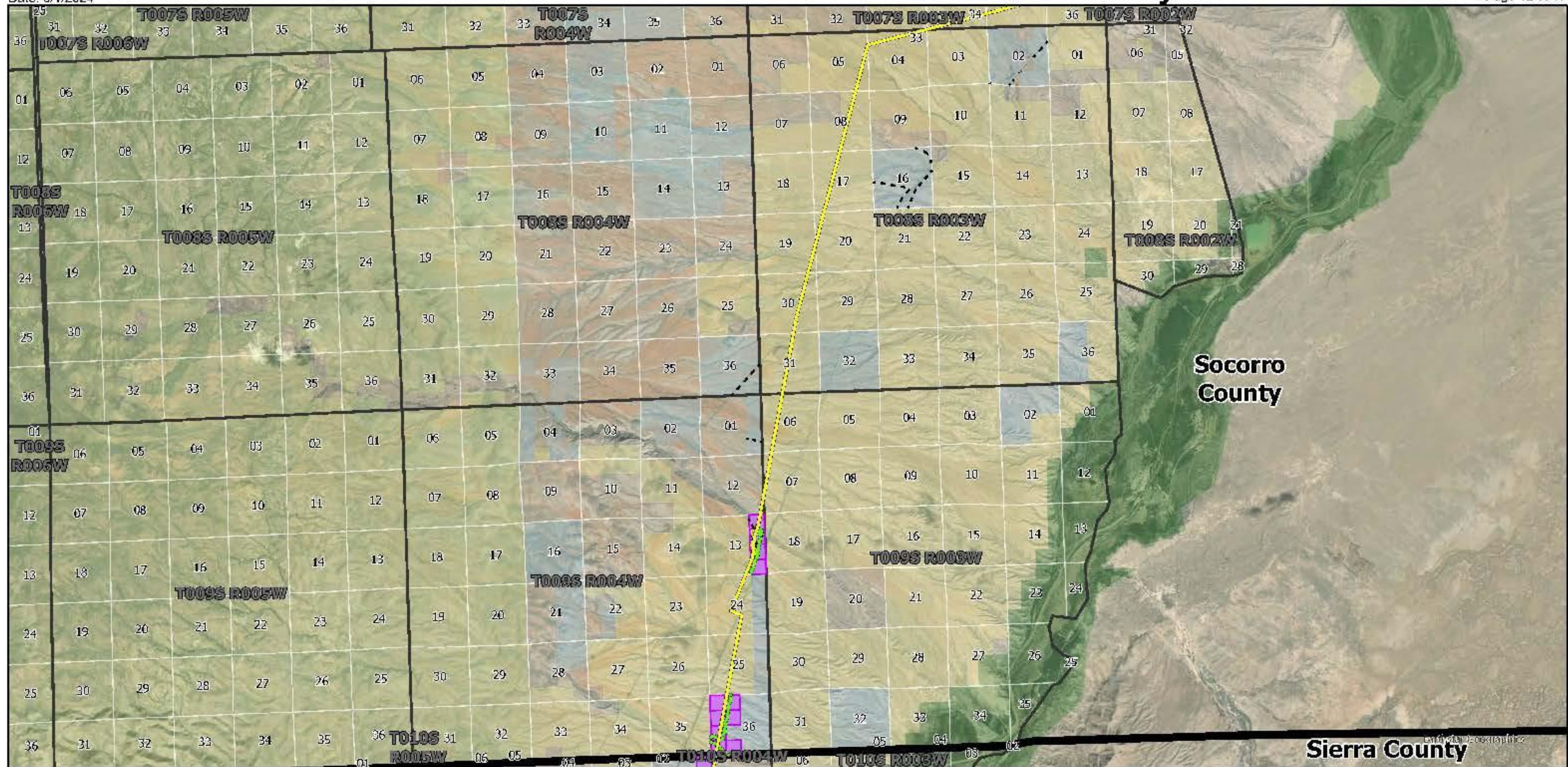
0 0.75 1.5 3 Miles



El Rio Sol Transmission Route - Socorro County

Date: 3/1/2024

Page 12 of 17



**El Rio Sol
Transmission,
LLC Project**



Project Features

- ERS Centerline
- Access Plan
- Non-Public Road
- Public Road

Land Ownership

- BLM Land
- USFS Land
- Private Land
- State Land
- State Park Land

Geographic Boundaries

- Section Boundary
- NMSLO Aliquot
- Township Boundary
- County Boundary



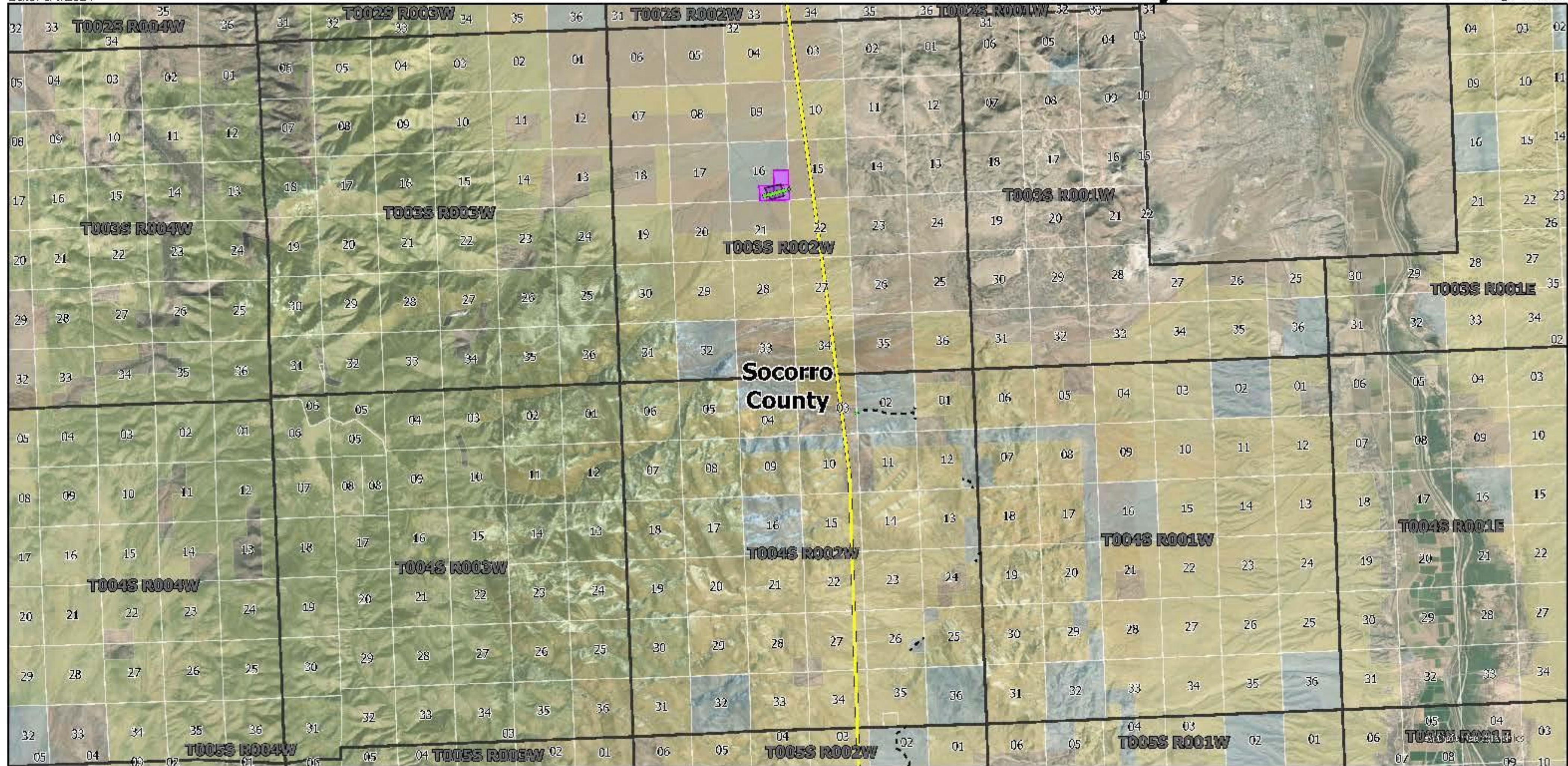
0 0.75 1.5 3 Miles



El Rio Sol Transmission Route - Socorro County

Date: 3/1/2024

Page 13 of 17



**El Rio Sol
Transmission,
LLC Project**



Project Features

- ERS Centerline
- Construction Yard
- Access Plan**
- Non-Public Road
- - - - - Public Road

Land Ownership

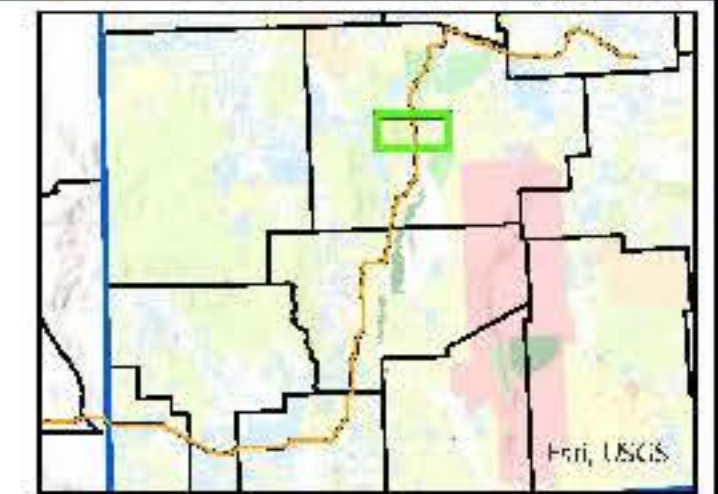
- BLM Land
- USFS Land
- Private Land
- State Land

Geographic Boundaries

- Section Boundary
- NMSLO Aliquot
- Township Boundary
- County Boundary



0 0.75 1.5 3 Miles

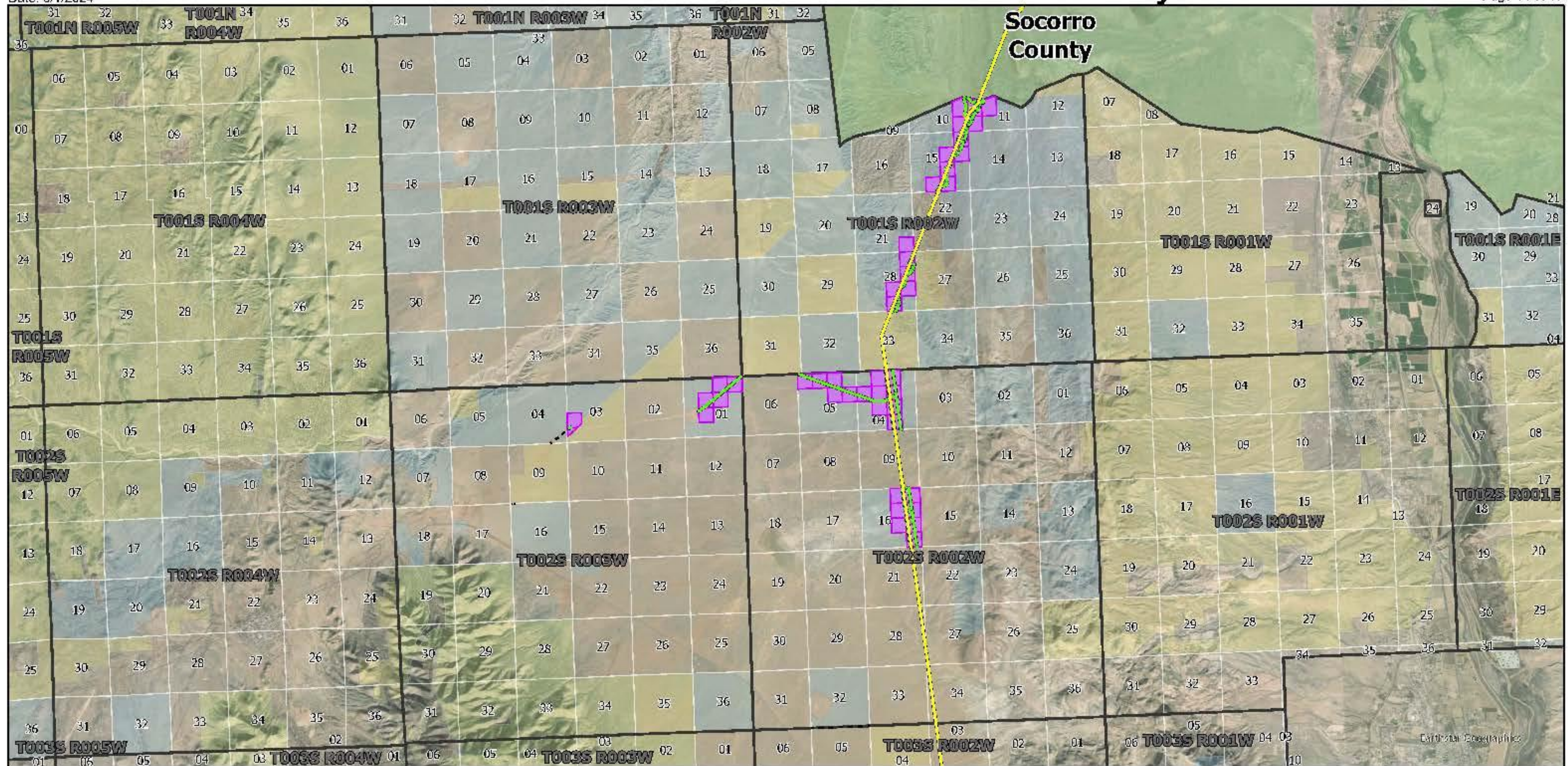


Peri, USGS

El Rio Sol Transmission Route - Socorro County

Date: 3/1/2024

Page 14 of 17



**El Rio Sol
Transmission,
LLC Project**



Project Features

— ERS Centerline

Access Plan

— Non-Public Road

..... Public Road

Land Ownership

BLM Land

USFS Land

USFWS Land

Private Land

State Land

SGF Land

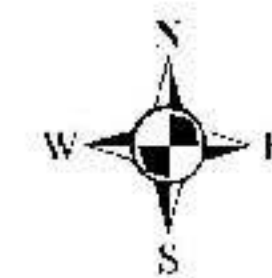
Geographic Boundaries

Section Boundary

NMSLO Aliquot

Township Boundary

County Boundary



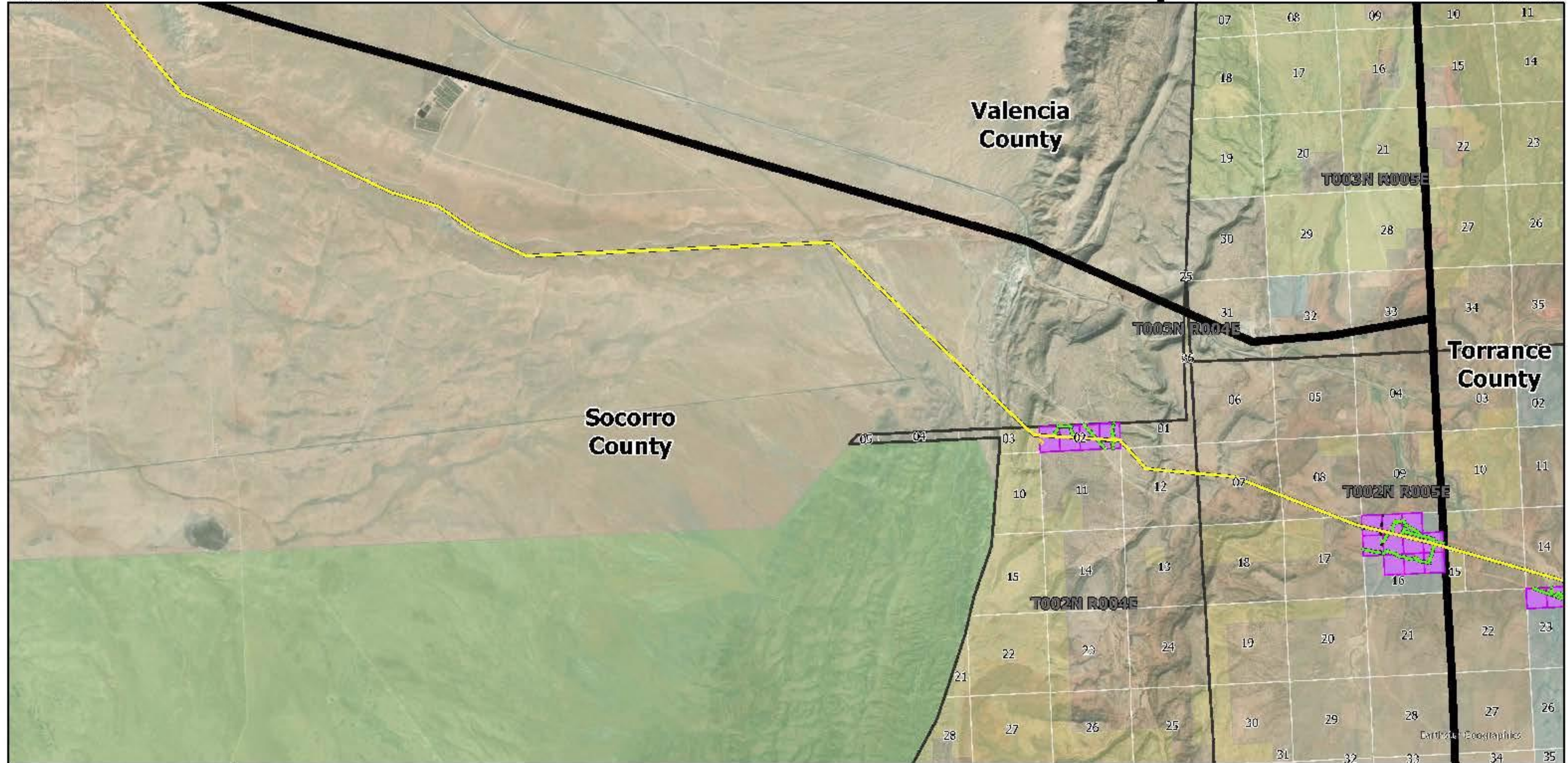
0 0.75 1.5 3 Miles



El Rio Sol Transmission Route - Socorro County

Date: 3/1/2024

Page 15 of 17



**El Rio Sol
Transmission,
LLC Project**



Project Features

— ERS Centerline

Access Plan

— Non-Public Road

..... Public Road

Land Ownership

BLM Land

USFS Land

USFWS Land

Private Land

State Land

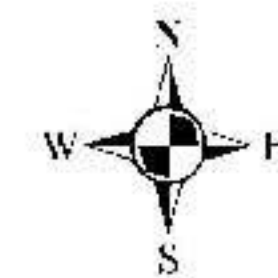
Geographic Boundaries

Section Boundary

NMSLO Aliquot

Township Boundary

County Boundary



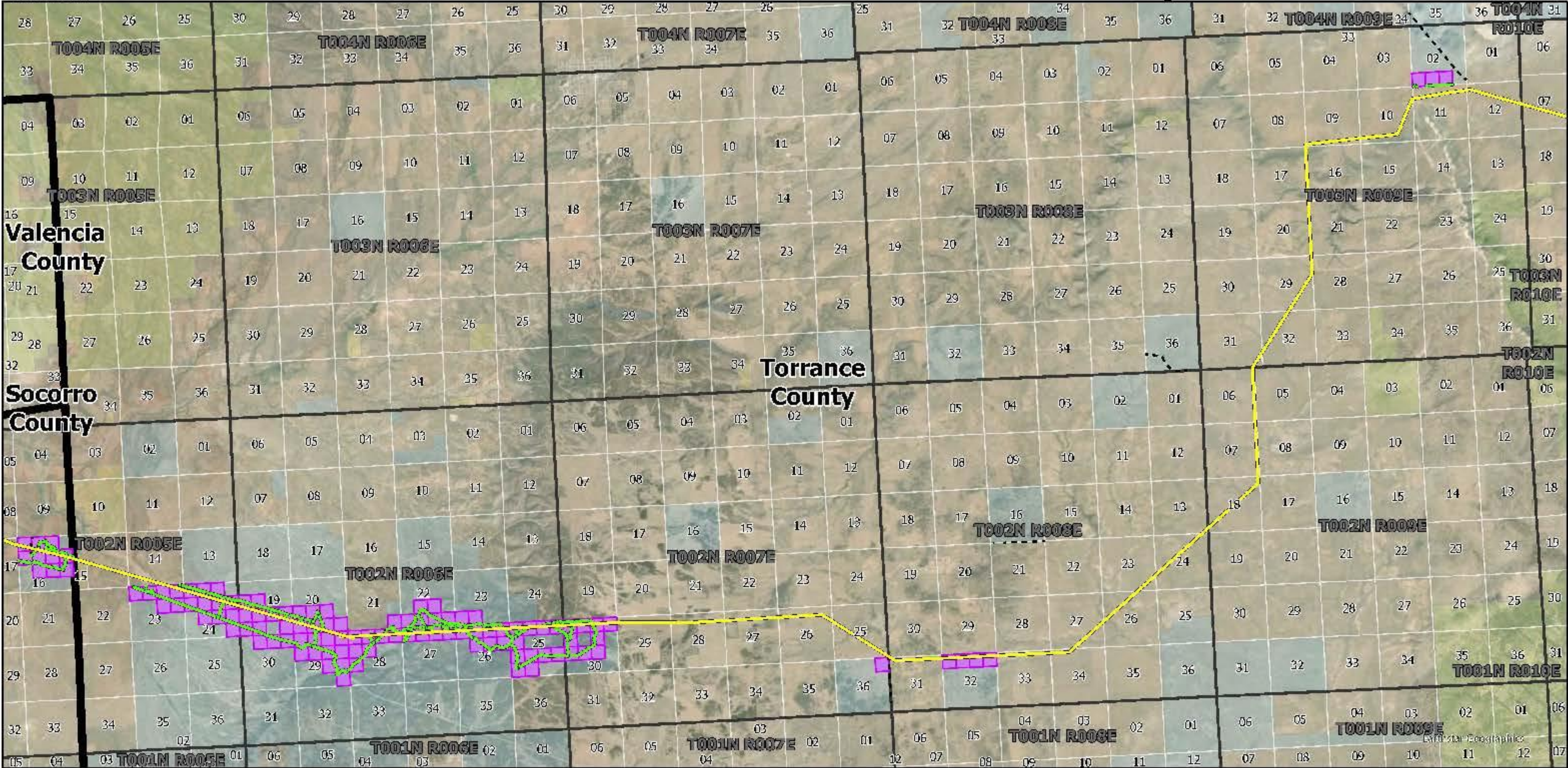
0 0.5 1 2 Miles




El Rio Sol Transmission Route - Torrance County

Date: 3/1/2024

Page 16 of 17



El Rio Sol Transmission, LLC Project



Project Features

- ERS Centerline
- Non-Public Road
- Public Road

Access Plan

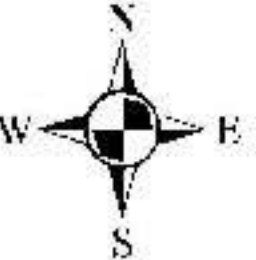

- Non-Public Road
- Public Road

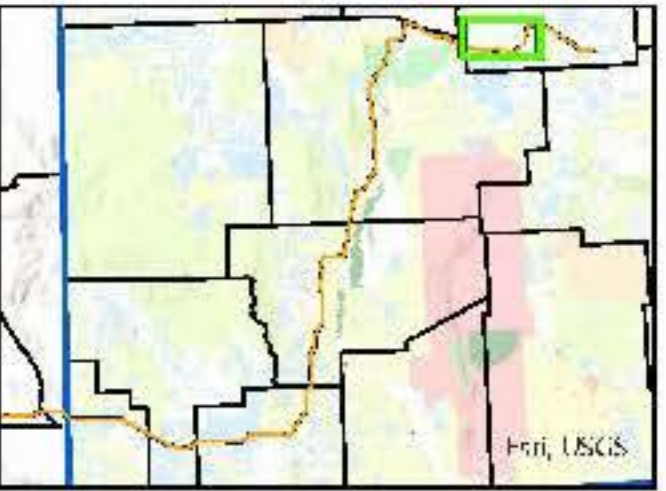
Land Ownership

- BLM Land
- USFS Land
- Private Land
- State Land

Geographic Boundaries

- Section Boundary
- NMSLO Aliquot
- Township Boundary
- County Boundary

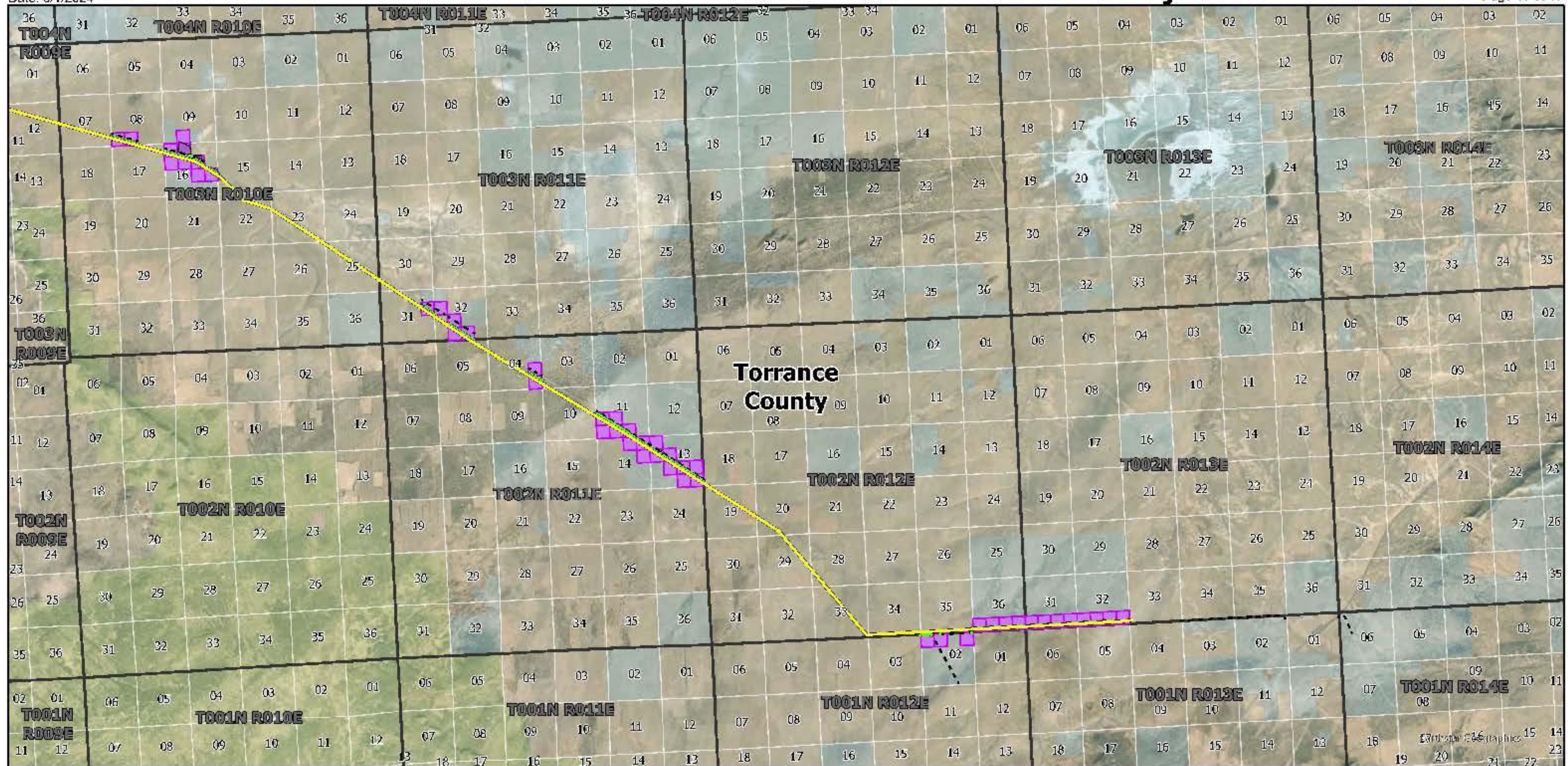





El Rio Sol Transmission Route - Torrance County

Date: 3/1/2024

Page 17 of 17



El Rio Sol Transmission, LLC Project



Project Features

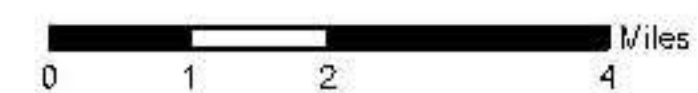
- ERS Centerline
- Construction Yard
- Access Plan
- Non-Public Road
- Public Road

Land Ownership

- USFS Land
- Private Land
- State Land

Geographic Boundaries

- Section Boundary
- NMSLO Aliquot
- Township Boundary
- County Boundary





www.RioSol.energy

AZ: (602) 808-2004

NM: (505) 559-4200