



State of New Mexico Commissioner of Public Lands

Executive Order No. 2023-002

Extending the Moratorium on New Oil and Gas and Mineral Leasing in Greater Chaco Area

WHEREAS, the Commissioner of Public Lands (Commissioner) has broad constitutional authority and statutory jurisdiction over the direction, control, care and disposition of state trust lands, in accordance with the acts of Congress relating thereto and such regulations as may be provided by law (*see* NM Const., art. XIII, Sec. 2 and NMSA 1978, § 19-1-1); and

WHEREAS, the Commissioner is authorized to withhold state trust lands from leasing for oil and gas or other purposes when she determines that it is in the best interests of the state land trust to do so (*see* NMSA 1978 §§ 19-8-33 and 19-10-19; 19.2.100.31 NMAC); and

WHEREAS, the Commissioner and the State Land Office have a duty to exercise due caution to ensure that cultural properties on state trust lands are not inadvertently damaged or destroyed (*see* NMSA 1978 § 18-6A-5); and

WHEREAS, the Chaco Culture National Historical Park (Chaco) is a state, national and international treasure, and is one of only 25 UNESCO designated World Heritage Sites in the United States; and

WHEREAS, many Indigenous nations, tribes and pueblos consider the greater Chaco landscape to be sacred lands and have archaeological, historical and cultural connections to the region; and

WHEREAS, on April 27, 2019, Commissioner Stephanie Garcia Richard issued Executive Order 2019-002 to safeguard state trust lands within the Chaco landscape, which placed a moratorium until December 31, 2023 on new oil, gas and mineral leasing on approximately 72,776 acres of state trust lands surrounding Chaco; and

WHEREAS, in 2019 the Commissioner convened a Chaco Canyon Working Group, which included several meetings in the Chaco region to receive input from Indigenous communities regarding the management of these ancestral lands; and

WHEREAS, on June 7, 2023, U.S. Secretary of Interior Deb Haaland issued an order formally withdrawing approximately 336,404 acres of U.S. Bureau of Land

Management lands surrounding Chaco to protect the greater landscape from oil, gas and mining development for a period of 20 years; and

WHEREAS, extending the existing moratorium on state trust lands for an additional 20-year term will help provide for greater consistency in federal-state land management practices around Chaco while also enabling the State Land Office to explore other land uses that are more compatible with the protection and preservation of the landscape; and

WHEREAS, the State Land Office promulgated the Cultural Properties Protection Rule in December of 2022, and the moratorium extension will provide additional opportunities to increase the acreage inventoried for cultural resources within the Chaco landscape to further identify, document, and protect significant cultural properties; and

NOW, THEREFORE, I, Stephanie Garcia Richard, Commissioner of Public Lands, do hereby order and direct that the state trust lands described in Appendix A shall be withheld from new leasing for oil and gas or mineral purposes until December 31, 2043, unless the Commissioner determines that the withdrawal shall be extended; and

BE IT FURTHER ORDERED that the withdrawal from leasing ordered herein shall be recorded in the State Land Office oil and gas and minerals tract books by means of a land use restriction;

BE IT FURTHER ORDERED that nothing herein shall restrict the State Land Office from issuing permits, rights of way or business leases related to existing oil, gas or mineral leases with valid existing rights within the area subject to the land use restriction.

SIGNED THIS 14 DAY OF December 2023.

STEPHANIE GARCIA RICHARD
COMMISSIONER OF PUBLIC LANDS



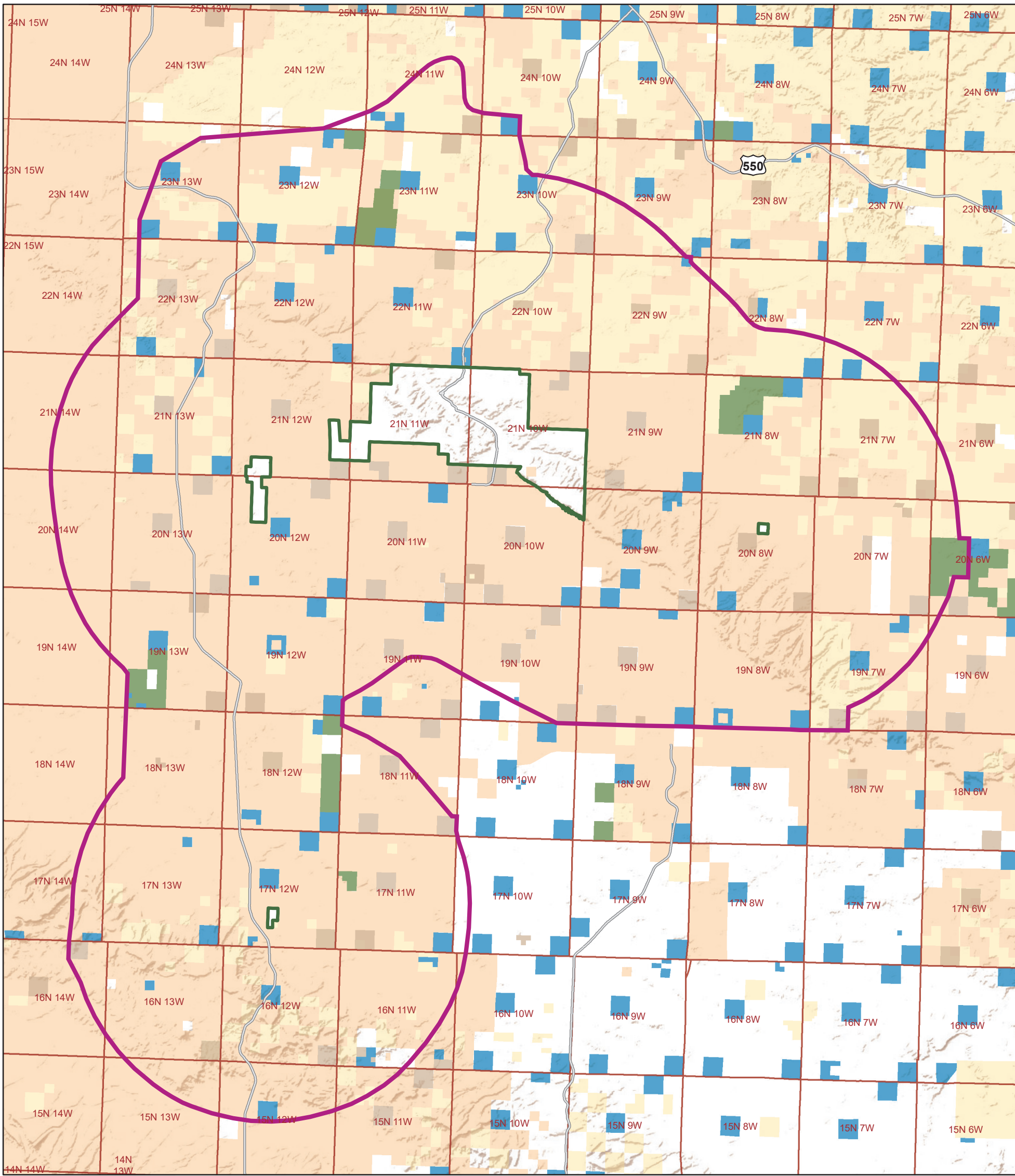
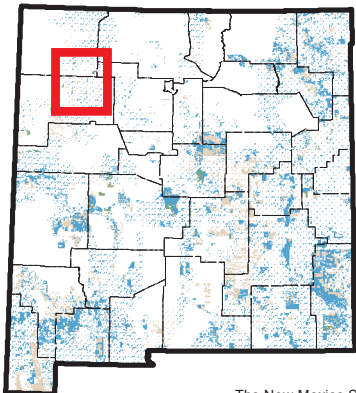


Exhibit A: NMSLO Mineral Leasing Restriction Around Chaco Culture National Historical Park



- NMSLO Chaco Restriction Area
- Chaco Culture National Historical Park Boundary

- State Trust Lands**
- Subsurface Estate
 - Surface Estate
 - Both Estates

- Other Surface Ownership**
- Bureau of Indian Affairs/Tribes
 - Bureau of Land Management



Stephanie Garcia Richard
Commissioner of Public Lands
505-827-5761
www.nmstatelands.org

The New Mexico State Land Office assumes no responsibility or liability for, or in connection with, the accuracy, reliability or use of the information provided herein, with respect to State Land Office data or data from other sources. Data pertaining to New Mexico State Trust Lands are provisional and subject to revision, and do not constitute an official record of title. Official records may be reviewed at the New Mexico State Land Office in Santa Fe, New Mexico. Compiled, edited and printed by the Land Office Geographic Information Center. V:\LOGIC\LURC\IMXD\Chaco_LURC_11x17. Save Date: December 4, 2023 Created by: csmith

Chaco LURC Extension: Exhibit A

TWN	Range	Sec	TWN	Range	Sec	TWN	Range	Sec	TWN	Range	Sec	TWN	Range	Sec
0150N	0120W	16	0190N	0100W	2	0200N	0110W	36	0220N	0100W	36	0220N	0100W	36
0160N	0110W	2	0190N	0100W	10	0200N	0120W	2	0220N	0110W	2	0220N	0110W	2
0160N	0110W	32	0190N	0100W	16	0200N	0120W	16	0220N	0110W	16	0220N	0110W	16
0160N	0120W	16	0190N	0100W	28	0200N	0120W	32	0220N	0110W	32	0220N	0110W	36
0160N	0120W	36	0190N	0100W	36	0200N	0120W	36	0220N	0120W	36	0220N	0120W	2
0160N	0130W	16	0190N	0110W	2	0200N	0130W	2	0220N	0120W	2	0220N	0120W	16
0160N	0130W	36	0190N	0110W	16	0200N	0130W	16	0220N	0120W	16	0220N	0120W	36
0160N	0140W	2	0190N	0120W	2	0200N	0130W	32	0220N	0130W	32	0220N	0130W	16
0170N	0110W	16	0190N	0120W	16	0200N	0130W	36	0220N	0130W	36	0220N	0130W	32
0170N	0110W	18	0190N	0120W	32	0210N	0070W	16	0220N	0130W	16	0220N	0130W	36
0170N	0110W	32	0190N	0120W	36	0210N	0070W	32	0230N	0100W	32	0230N	0100W	16
0170N	0110W	36	0190N	0130W	2	0210N	0070W	36	0230N	0100W	36	0230N	0100W	32
0170N	0120W	2	0190N	0130W	16	0210N	0080W	2	0230N	0100W	2	0230N	0100W	36
0170N	0120W	16	0190N	0130W	21	0210N	0080W	3	0230N	0110W	3	0230N	0110W	2
0170N	0120W	32	0190N	0130W	28	0210N	0080W	4	0230N	0110W	4	0230N	0110W	16
0170N	0120W	36	0190N	0130W	29	0210N	0080W	5	0230N	0110W	5	0230N	0110W	17
0170N	0130W	2	0190N	0130W	32	0210N	0080W	7	0230N	0110W	7	0230N	0110W	19
0170N	0130W	36	0190N	0130W	33	0210N	0080W	8	0230N	0110W	8	0230N	0110W	20
0170N	0140W	36	0190N	0130W	36	0210N	0080W	9	0230N	0110W	9	0230N	0110W	29
0180N	0110W	16	0200N	0060W	17	0210N	0080W	16	0230N	0110W	16	0230N	0110W	30
0180N	0110W	32	0200N	0060W	18	0210N	0080W	17	0230N	0110W	17	0230N	0110W	31
0180N	0110W	36	0200N	0060W	19	0210N	0080W	18	0230N	0110W	18	0230N	0110W	32
0180N	0120W	1	0200N	0060W	20	0210N	0080W	36	0230N	0110W	36	0230N	0110W	36
0180N	0120W	2	0200N	0060W	30	0210N	0090W	16	0230N	0120W	1	0230N	0120W	1
0180N	0120W	13	0200N	0070W	2	0210N	0090W	32	0230N	0120W	32	0230N	0120W	2
0180N	0120W	16	0200N	0070W	16	0210N	0090W	36	0230N	0120W	36	0230N	0120W	16
0180N	0120W	24	0200N	0070W	36	0210N	0100W	2	0230N	0120W	2	0230N	0120W	32
0180N	0120W	25	0200N	0080W	16	0210N	0100W	32	0230N	0120W	32	0230N	0120W	36
0180N	0120W	32	0200N	0080W	32	0210N	0110W	32	0230N	0130W	2	0230N	0130W	2
0180N	0120W	36	0200N	0080W	36	0210N	0110W	36	0230N	0130W	36	0230N	0130W	16
0180N	0130W	2	0200N	0090W	2	0210N	0120W	16	0230N	0130W	16	0230N	0130W	32
0180N	0130W	16	0200N	0090W	16	0210N	0120W	36	0230N	0130W	36	0230N	0130W	36
0190N	0070W	2	0200N	0090W	28	0210N	0130W	2	0240N	0100W	2	0240N	0100W	32
0190N	0070W	16	0200N	0090W	32	0210N	0130W	16	0240N	0110W	16	0240N	0110W	31
0190N	0070W	32	0200N	0090W	36	0210N	0130W	32	0240N	0110W	32	0240N	0110W	32
0190N	0080W	32	0200N	0100W	16	0210N	0130W	36	0240N	0110W	36	0240N	0110W	36
0190N	0080W	36	0200N	0100W	30	0220N	0070W	32						
0190N	0090W	2	0200N	0100W	32	0220N	0080W	36						
0190N	0090W	16	0200N	0100W	36	0220N	0090W	2						
0190N	0090W	30	0200N	0110W	2	0220N	0090W	16						
0190N	0090W	32	0200N	0110W	16	0220N	0090W	36						
0190N	0090W	34	0200N	0110W	26	0220N	0100W	16						
0190N	0090W	36	0200N	0110W	32	0220N	0100W	32						