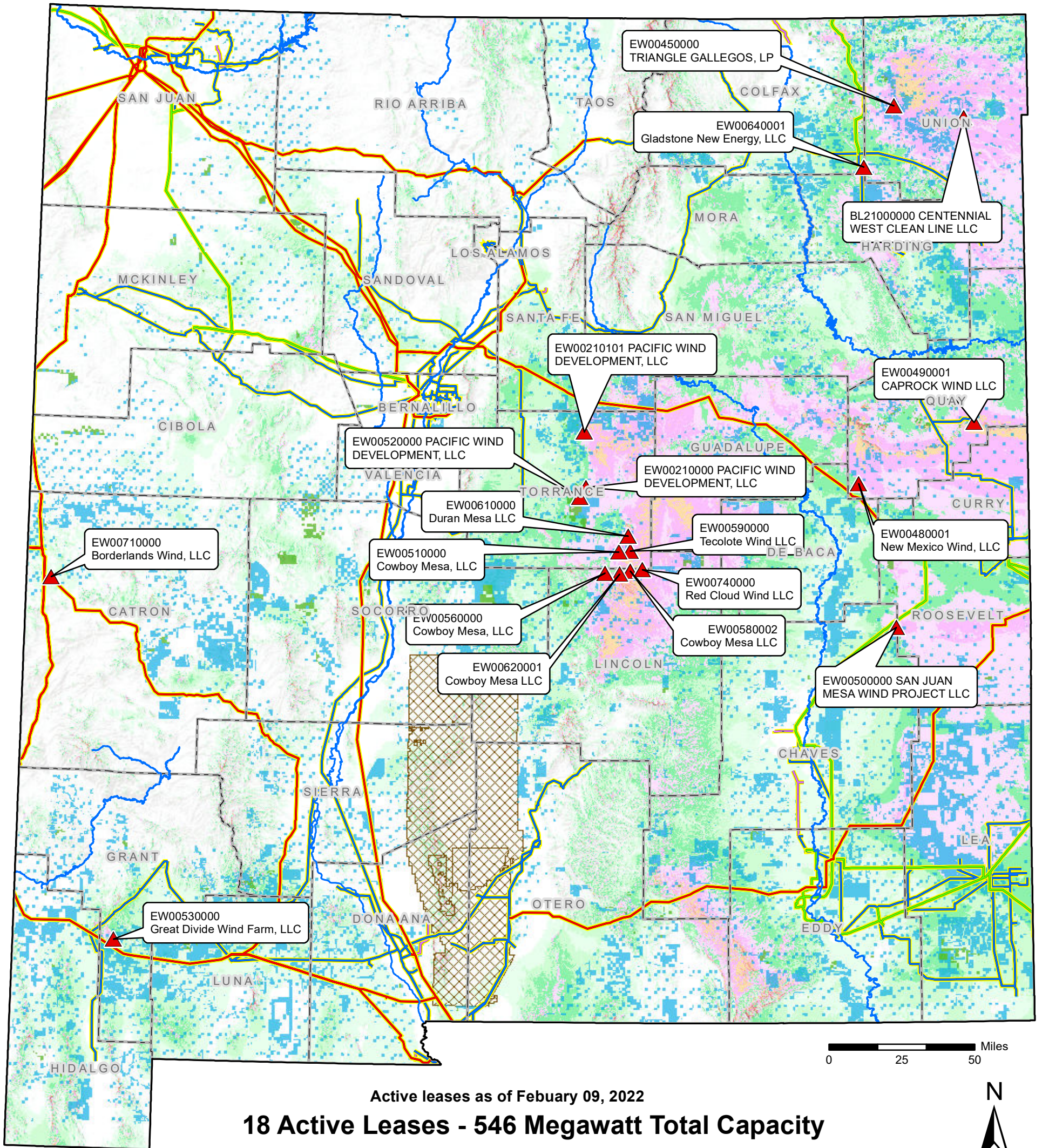


# Active Wind Energy Projects on NM State Trust Land



Active leases as of February 09, 2022

## 18 Active Leases - 546 Megawatt Total Capacity

### NM State Land Office

#### Wind Leases

▲ Active

#### State Trust Lands

■ Surface Estate

■ Both Estates

~ Rivers

### Mean Speed at 50 m

#### mph

□ < 12.3

□ 12.3 - 13.4

□ 13.4 - 14.5

□ 14.5 - 15.7

□ 15.7 - 16.8

□ 16.8 - 17.9

□ 17.9 - 19.0

□ 19.0 - 20.1

□ 20.1 - 21.3

□ > 21.3

#### m/s

< 5.5

5.5 - 6.0

6.0 - 6.5

6.5 - 7.0

7.0 - 7.5

7.5 - 8.0

8.0 - 8.5

8.5 - 9.0

9.0 - 9.5

> 9.5

### Electric Transmission Lines

— Under 100 Kv

— 100 - 161 Kv

— 220 - 287 Kv

— 345 - 500 Kv

▨ White Sands Missile Range



Stephanie Garcia Richard  
Commissioner of Public Lands  
505-827-5761  
[www.nmstatelands.org](http://www.nmstatelands.org)