

**EXHIBIT A: PHOTOGRAPHS (API # 30-005-27971)**

**Photo 1:** Cato San Andres Unit Well #504 viewed facing southeast approximately (SW4/SW4, section 02, T08S, R30E).



**Photo 2:** Close up view of sign identifying the well site.

**EXHIBIT A: PHOTOGRAPHS (API # 30-005-27971)**

**Photo 3:** Close up view of the wellhead at the Cato San Andres Unit Well #504, staining is present (SW4/SW4, section 02, T08S, R30E).



**Photo 4:** Broken electrical meter observed at the Cato San Andres Unit Well #504.



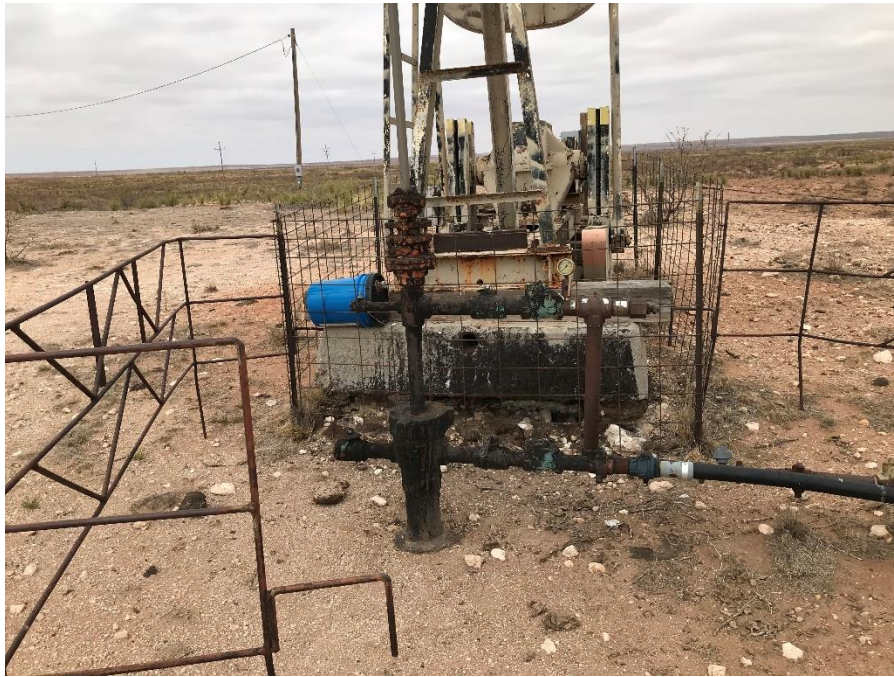
**EXHIBIT A: PHOTOGRAPHS (API # 30-005-20271)**

**Photo 5:** Cato San Andres Unit Well #005 viewed facing north approximately (NW4/SW4, section 02, T08S, R30E).



**Photo 6:** Close up view of sign identifying the well site.



**EXHIBIT A: PHOTOGRAPHS (API # 30-005-20271)**

**Photo 7:** Close up view of the wellhead at the Cato San Andres Unit Well #005 (NW4/SW4, section 02, T08S, R30E).



**Photo 8:** Evidence of a prior release observed near the well's flowlines (NW4/SW4, section 02, T08S, R30E).



**EXHIBIT A: PHOTOGRAPHS (API # 30-005-10536)**

**Photo 9:** Cato San Andres Unit Well #007 viewed facing northwest approximately (SW4/SW4, section 02, T08S, R30E).



**Photo 10:** Close up view of sign identifying the well site.



**EXHIBIT A: PHOTOGRAPHS (API # 30-005-10536)**

**Photo 11:** Close up view of the wellhead at the Cato San Andres Unit Well #007 (SW4/SW4, section 02, T08S, R30E).



**Photo 12:** Broken electrical meter observed at the Cato San Andres Unit Well #007 (SW4/SW4, section 02, T08S, R30E).



**EXHIBIT A: PHOTOGRAPHS (API # 30-005-20001)**

**Photo 13:** Cato San Andres Unit Well #006 viewed facing northwest approximately (SE4/SW4, section 02, T08S, R30E).



**Photo 14:** Close up view of sign identifying the well site.



**EXHIBIT A: PHOTOGRAPHS (API # 30-005-20001)**

**Photo 15:** Close up view of unplugged/open wellbore at the Cato San Andres Unit Well #006.



**Photo 16:** Broken electrical meter observed at the Cato San Andres Unit Well #006 (SE4/SW4, section 02, T08S, R30E).



**EXHIBIT A: PHOTOGRAPHS (API # 30-005-27980)**

**Photo 17:** Cato San Andres Unit Well #505 viewed facing southwest approximately (SE4/SW4, section 02, T08S, R30E). Note the pad needs to be reclaimed.



**Photo 18:** Close up view of well signage and unplugged/open wellbore.



**EXHIBIT A: PHOTOGRAPHS (API # 30-005-27981)**

**Photo 19:** Cato San Andres Unit Well #506 viewed facing south approximately (SW4/SE4, section 02, T08S, R30E).



**Photo 20:** Close up view of sign identifying the site.



**EXHIBIT A: PHOTOGRAPHS (API # 30-005-27981)**

**Photo 21:** Close up view of the wellhead at the Cato San Andres Unit Well #506 (SW4/SE4, section 02, T08S, R30E).



**Photo 22:** Asphaltine residue observed at the Cato San Andres Unit Well #506 (SW4/SE4, section 02, T08S, R30E).



**EXHIBIT A: PHOTOGRAPHS (API # 30-005-20789)**

**Photo 23:** State 32 #005 well viewed facing northwest approximately (NE4/NW4, section 32, T07S, R31E). Note the staining present on the pad.

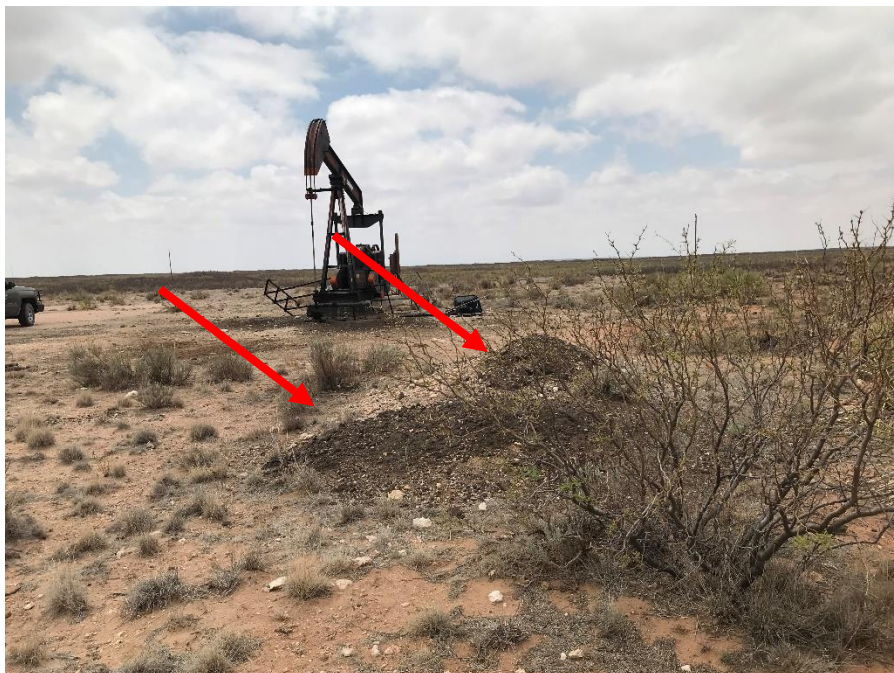


**Photo 24:** Close up view of the State 32 #005 wellhead, staining present.



**EXHIBIT A: PHOTOGRAPHS (API # 30-005-20789)**

**Photo 25:** Scrap pipe observed on the well pad.



**Photo 26:** Two small stockpiles of contaminated soil near the northeast corner of the pad (no liner or secondary containment beneath soil).



**EXHIBIT A: PHOTOGRAPHS (API # 30-005-20695)**

**Photo 27:** State 32 #003 well viewed facing northwest approximately (NE4/NE4, section 32, T07S, R31E). Note the staining present on the pad.



**Photo 28:** Close up view of the State 32 #003 wellhead, staining present.



**EXHIBIT A: PHOTOGRAPHS (API # 30-005-20695)**

**Photo 29:** One small stockpile of contaminated soil near the pumpjack (no liner or secondary containment beneath soil).



**Photo 30:** Flowline patch, evidence of prior leak on this pipeline.



**EXHIBIT A: PHOTOGRAPHS (API # 30-005-20674)**

**Photo 31:** State 32 #002 well and tank battery viewed facing southwest approximately (NW4/SE4, section 32, T07S, R31E).



**Photo 32:** State 32 #002 wellhead, staining present.



**EXHIBIT A: PHOTOGRAPHS (API # 30-005-20674)**

**Photo 33:** Trash observed at the well.

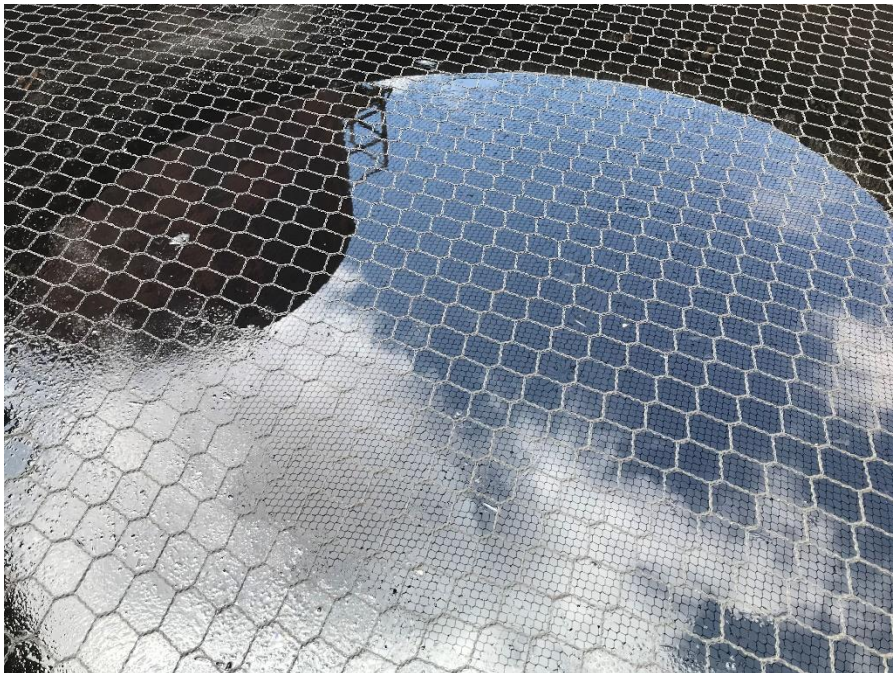


**Photo 34:** State 32 #002 tank battery viewed facing west approximately (NW4/SE4, section 32, T07S, R31E).



**EXHIBIT A: PHOTOGRAPHS (API # 30-005-20674)**

**Photo 35:** Open top fiberglass tank at State 32 #002 tank battery.



**Photo 36:** View of product remaining in the open top tank.



**EXHIBIT A: PHOTOGRAPHS (API # 30-005-20674)**

**Photo 37:** Damaged storage tank and staining at the base.



**Photo 38:** Large clumps of contaminated soil in the containment berm structure.



**EXHIBIT A: PHOTOGRAPHS (API # 30-005-20674)**

**Photo 39:** Staining observed along the west side of the site.



**Photo 40:** Evidence of previous release (bare soil and asphaltine) observed directly south of the tank battery



**EXHIBIT A: PHOTOGRAPHS (API # 30-005-20735)**

**Photo 41:** State 32 #004 well and tank battery viewed facing northwest approximately (SE4/SW4, section 32, T07S, R31E).



**Photo 42:** Close up view of State 32 #004 wellhead.



## EXHIBIT B: MAP

