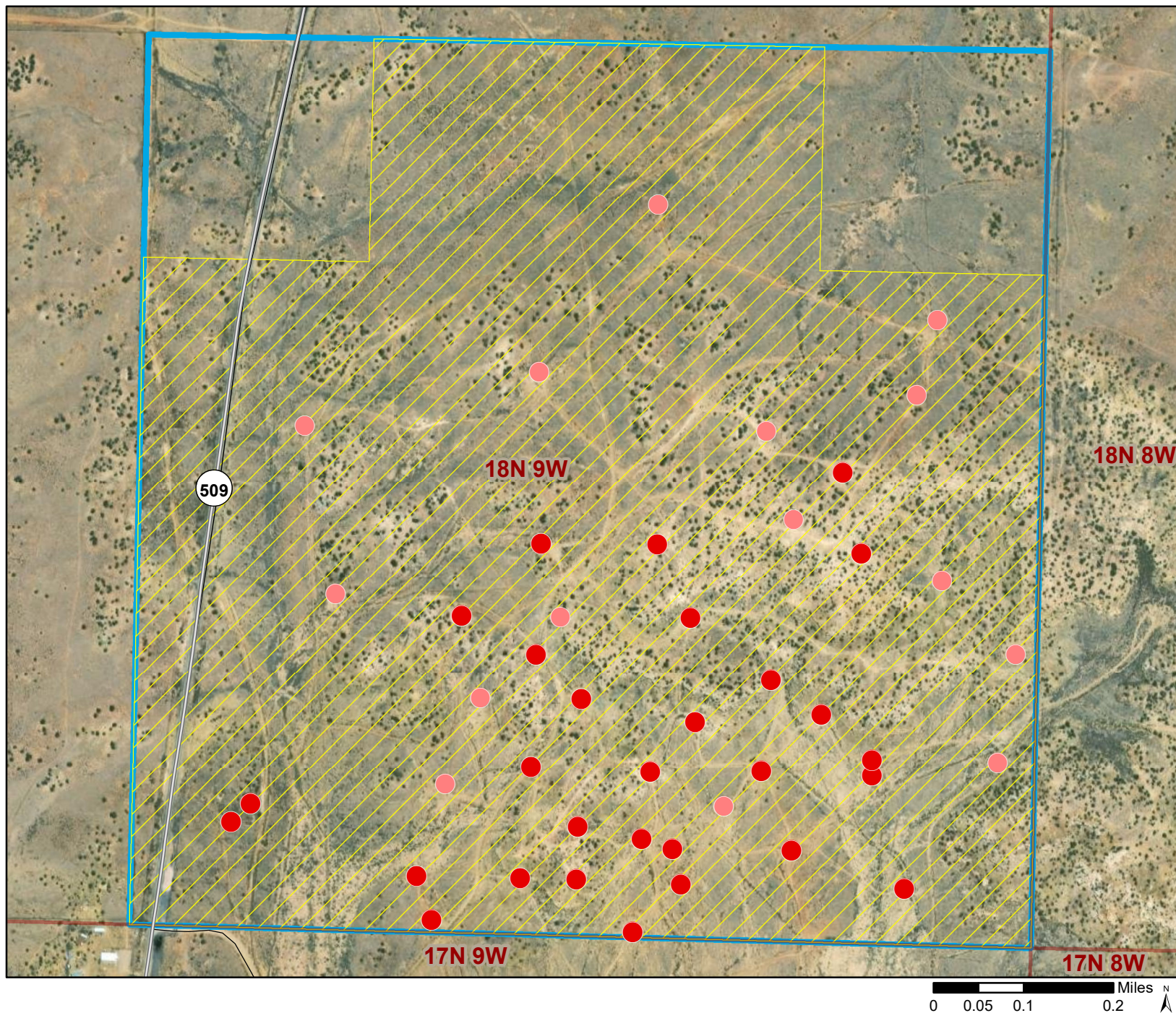


Garcia Richard v. BC&D and Dominion - Location of Expired Leases and Inactive Wells



Stephanie Garcia Richard
Commissioner of Public Lands
505-827-5761
www.nmstatelands.org



Previously Leased Land

Inactive Wells

Unplugged

Plugged

State Trust Land

Subsurface Estate

Surface Estate

Both Estates

