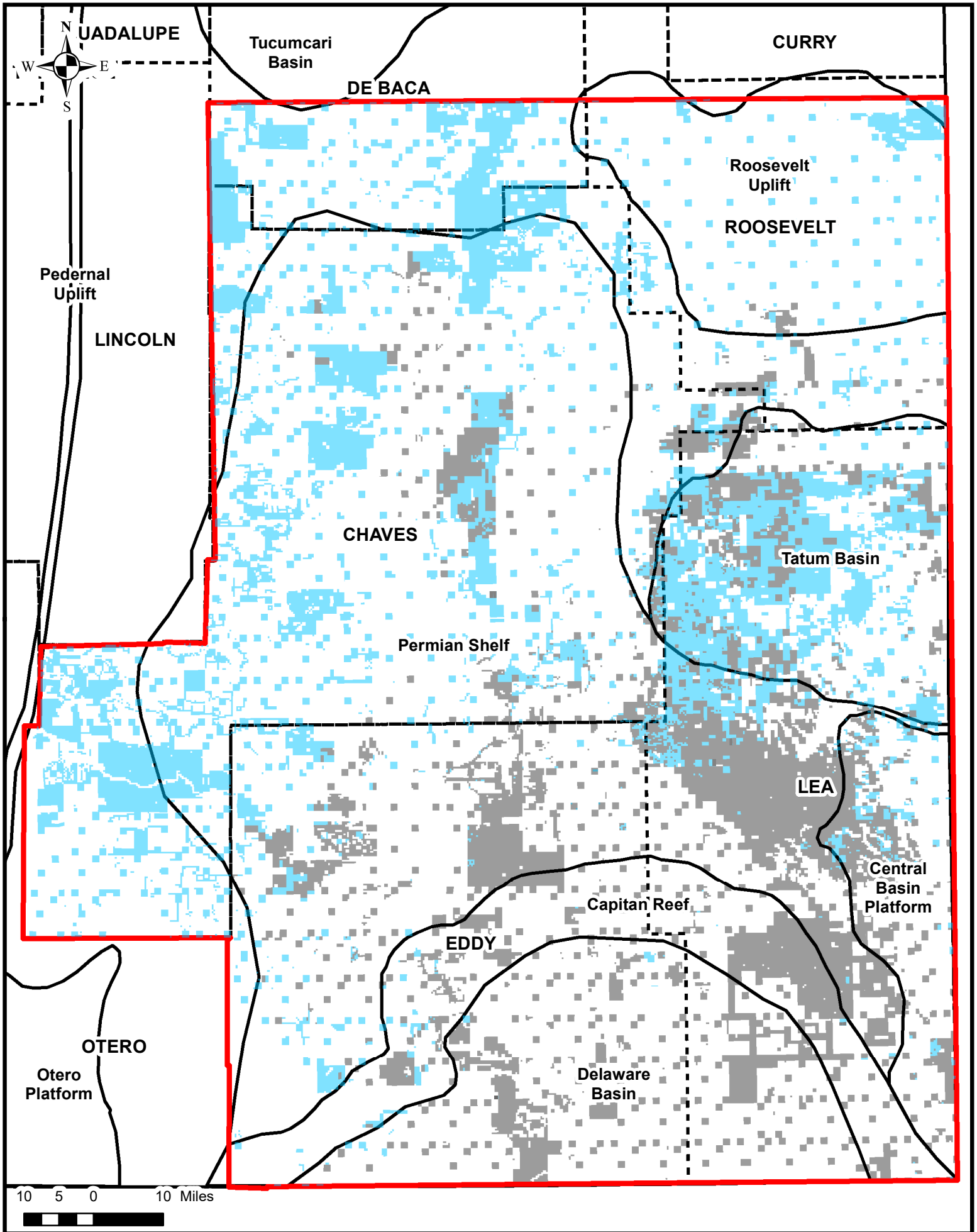


PERMIAN BASIN LEASES AND OPEN LANDS

Date: 12/16/2020



Approximate Percentage of Open Land in Delaware Basin: 2%
 Approximate Percentage of Open Land in Capitan Reef: 7%

Legend

- County Boundaries
- Geologic Regions
- Southeast Restricted District
- Open Lands
- Oil and Gas Leases



Stephanie Garcia Richard
 Commissioner of Public Lands
 505-827-5761
www.nmstatelands.org

The New Mexico State Land Office assumes no responsibility or liability for, or in connection with, the accuracy, reliability or use of the information provided here, in State Land Office data layers or any other data layer.