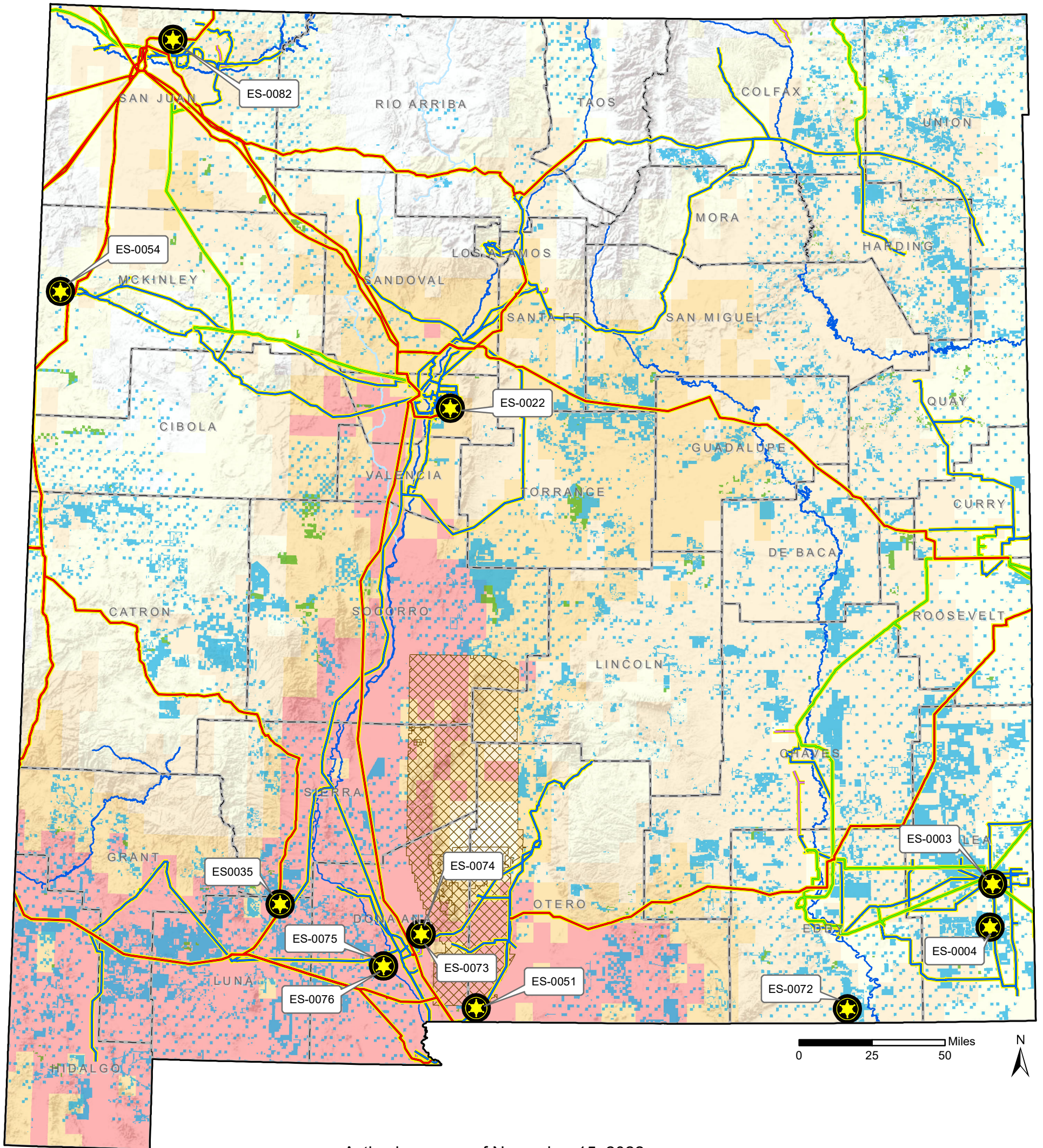


# Active Solar Energy Leases on NM State Trust Land



Active leases as of November 15, 2022

## 12 Active Leases - 273 Megawatt Total Capacity

### NM State Land Office

Active Solar Leases

### State Trust Lands

Surface Estate

Both Estates

Rivers

### Solar Radiation, Latitude Tilt

5673.9 - 6041.6

6041.7 - 6179.9

6180.0 - 6297.5

6297.6 - 6440.1

6440.2 - 6659.6

### Electric Transmission Lines

#### Voltage Class

Under 100 Kv

100 -161 Kv

220 - 287 Kv

345 - 500 Kv

White Sands Missile Range



Stephanie Garcia Richard  
Commissioner of Public Lands  
505-827-5761

[www.nmstatelands.org](http://www.nmstatelands.org)

The New Mexico State Land Office assumes no responsibility or liability for, or in connection with, the accuracy, reliability or use of the information provided herein, with respect to State Land Office data or data from other sources. Data pertaining to New Mexico State Trust Lands are provisional and subject to revision, and do not constitute an official record of title. Official records may be reviewed at the New Mexico State Land Office in Santa Fe, New Mexico.

Compiled, edited and printed by the Land Office Geographic Information Center. V:\Commercial\Renewable\_Energy\MXD\ExportedMaps\Maps for WebSite\20221115\_Active\_Solar\_Energy\_Projects\_on\_NM\_State\_Trust\_Land. Save Date: January 27, 2023. Created by: David Barsanti dbarsanti@sls.state.nm.us 505-827-5767

**LONG TERM SOLAR LEASES ON NEW MEXICO STATE TRUST LAND**

| <b>Lease Number</b> | <b>Status</b> | <b>Project Name</b>          | <b>Parent Company Name</b>                 | <b>Lessee Name</b>               | <b>County</b> | <b>Acres</b> | <b>Megawatts</b> |
|---------------------|---------------|------------------------------|--|----------------------------------|---------------|--------------|------------------|
| ES-0003             | Operating     | Monument Solar               | Longroad Energy                            | Longroad Energy Management       | Lea           | 200          | 10.0             |
| ES-0004             | Operating     | Lea Solar                    | Longroad Energy                            | Longroad Energy Management       | Lea           | 200          | 10.0             |
| ES-0022             | Operating     | Eubank Landfill Solar        | Emcore                                     | Emcore Solar New Mexico          | Bernalillo    | 36           | 2.0              |
| ES-0035             | Operating     | Macho Springs Solar          | Southern Power and Turner Renewable Energy | Southern Turner Renewable Energy | Luna          | 597          | 48.6             |
| ES-0051             | Development   | Buena Vista Energy Center    | NextEra                                    | Buena Vista Energy Center        | Otero         | 2,775        | 120.0            |
| ES-0054             | Development   | Wildcat Solar                | Solariant                                  | Wildcat Solar Power Plant        | McKinley      | 480          | 40.0             |
| ES-0072             | Development   | Hayhurst Solar               | Chevron USA Inc                            | Hayhurst NM Solar                | Eddy          | 326          | 25.8             |
| ES-0073             | Operating     | Solar for Las Cruces Well 42 | City of Las Cruces                         | City of Las Cruces               | Doña Ana      | 3            | 0.7              |
| ES-0074             | Operating     | Solar for Las Cruces Well 43 | City of Las Cruces                         | City of Las Cruces               | Doña Ana      | 3            | 0.7              |
| ES-0075             | Operating     | Solar for Las Cruces Well 63 | City of Las Cruces                         | City of Las Cruces               | Doña Ana      | 6            | 0.5              |
| ES-0076             | Operating     | Solar for Las Cruces Well 68 | City of Las Cruces                         | City of Las Cruces               | Doña Ana      | 1            | 0.2              |
| ES-0082             | Development   | San Juan Solar               | D.E. Shaw                                  | San Juan Solar                   | San Juan      | 194          | 15.0             |
|                     |               |                              |  |                                  |               |              |                  |

**Overall Total                    4,821                    273.5**

\*\* Shaded cells above indicate estimates