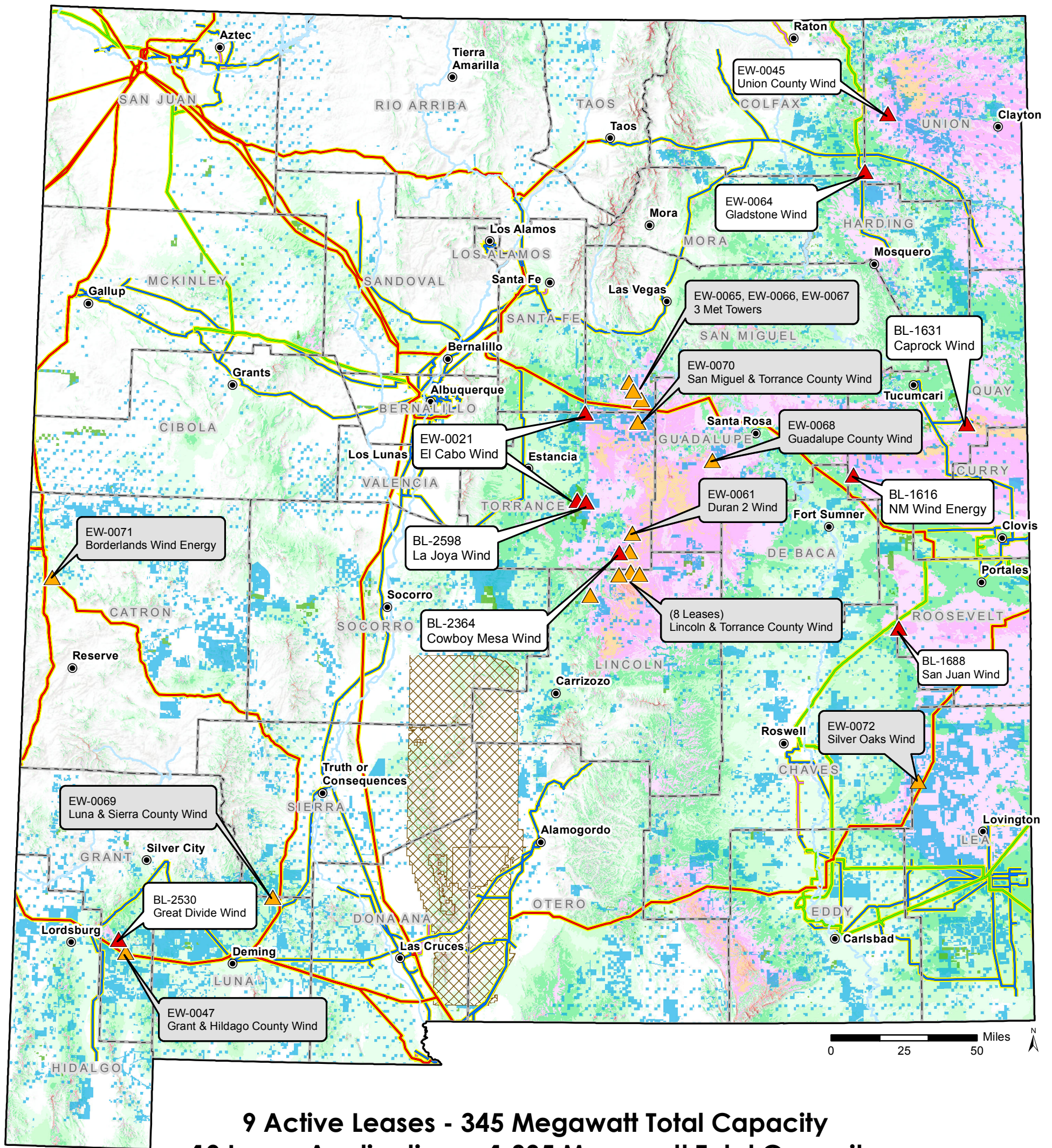


Wind Energy Projects on NM State Trust Land



9 Active Leases - 345 Megawatt Total Capacity
19 Lease Applications - 1,835 Megawatt Total Capacity

NM State Land Office	Mean Speed at 50 m		Electric Transmission Lines
	mph	m/s	
Wind Leases			— Under 100 Kv
▲ Pending	< 12.3	< 5.5	— 100 -161 Kv
▲ Active	12.3 - 13.4	5.5 - 6.0	— 220 - 287 Kv
□ Active Wind Leases	13.4 - 14.5	6.0 - 6.5	— 345 - 500 Kv
■ Wind Lease Applications	14.5 - 15.7	6.5 - 7.0	▨ White Sands Missile Range
State Trust Lands	15.7 - 16.8	7.0 - 7.5	
■ Surface Estate	16.8 - 17.9	7.5 - 8.0	
■ Both Estates	17.9 - 19.0	8.0 - 8.5	
— Rivers	19.0 - 20.1	8.5 - 9.0	
	20.1 - 21.3	9.0 - 9.5	
	> 21.3	> 9.5	



Stephanie Garcia Richard
 Commissioner of Public Lands
 505-827-5761
www.nmstatelands.org

The New Mexico State Land Office assumes no responsibility or liability for, or in connection with, the accuracy, reliability or use of the information provided herein, with respect to State Land Office data or data from other sources. Data pertaining to New Mexico State Trust Lands are provisional and subject to revision, and do not constitute an official record of title. Official records may be reviewed at the New Mexico State Land Office in Santa Fe, New Mexico. Compiled, edited and printed by the Land Office Geographic Information Center. V:\Commercial\Renewable_Energy\MXD\ExportedMaps\Current_Potential_WIND_Stats_20200203. Save Date: February 3, 2020. Created by: Eleanor Nestlerode enestlerode@sls.state.nm.us 505-827-5735