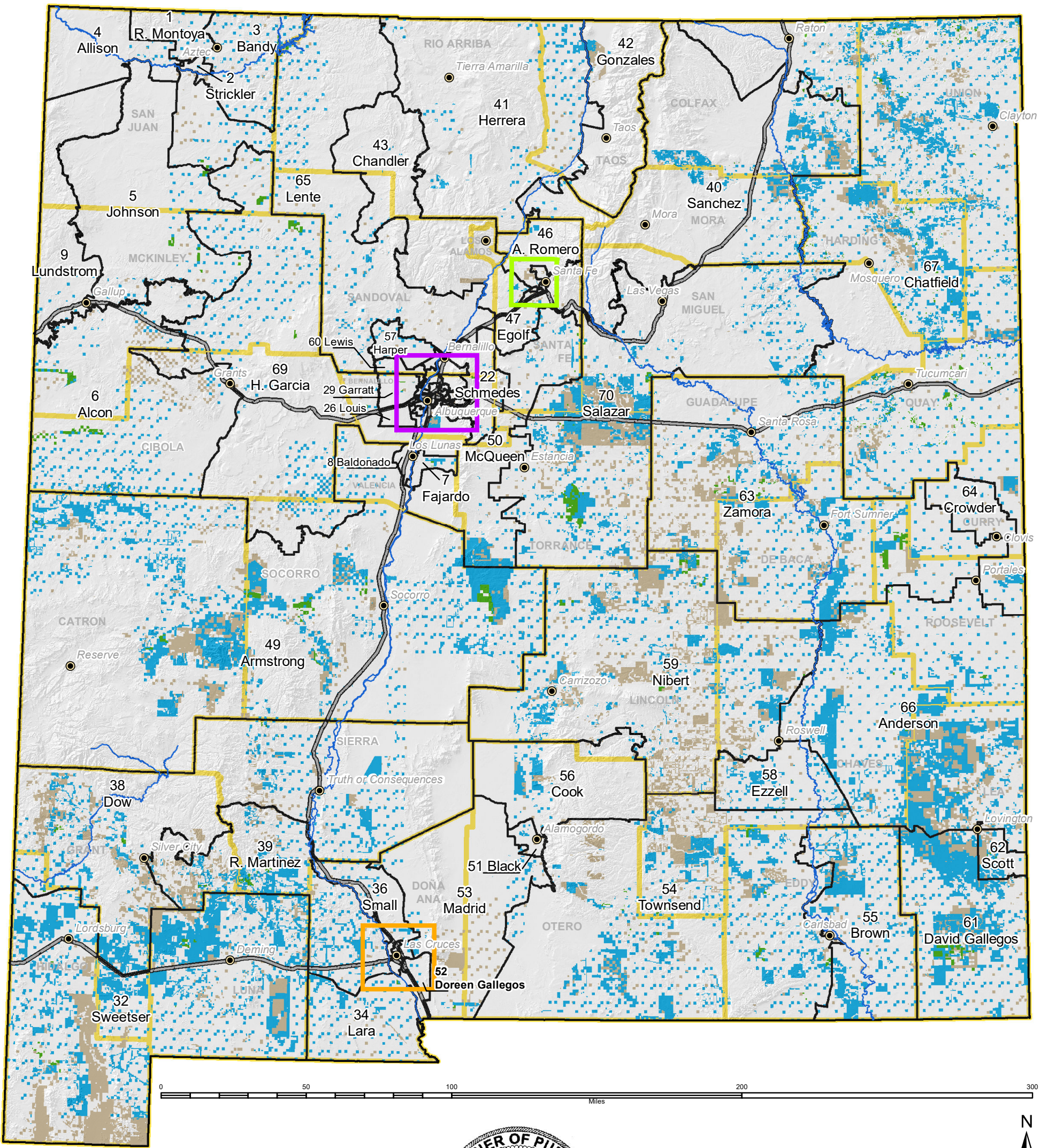










State of New Mexico

2019 State House of Representatives Districts with State Trust Lands



Stephanie Garcia Richard
Commissioner of Public Lands
505-827-5761
www.nmstatelands.org

Legend

- | | |
|---|---|
|  Subsurface Estate |  County Seats |
|  Surface Estate |  Interstates |
|  Both Estates |  Major Rivers |
| |  Representatives Districts |
| |  County Lines |

Please see the back of this page for enlarged insets covering the Albuquerque, Santa Fe and Las Cruces areas, and for a listing of House District Numbers and the State Representatives for those districts.

The New Mexico State Land Office assumes no responsibility or liability for, or in connection with, the accuracy, reliability or use of the information provided herein, with respect to State Land Office data or data from other sources. Data pertaining to New Mexico State Trust Lands are provisional and subject to revision, and do not constitute an official record of title. Official records may be reviewed at the New Mexico State Land Office in Santa Fe, New Mexico.

Compiled, edited and printed by the Land Office Geographic Information Center. V:\LOGIC\GIS SHARED\NMLegisDist\HouseDist\Tabloid2019FRONT.
Save Date: January 28, 2019 Print Date: January 28, 2019. Created by: Eleanore Nestlerode enestlerode@slo.state.nm.us 505-827-5735

2019 State House of Representatives Districts with State Trust Lands

Detailed View of Large Cities

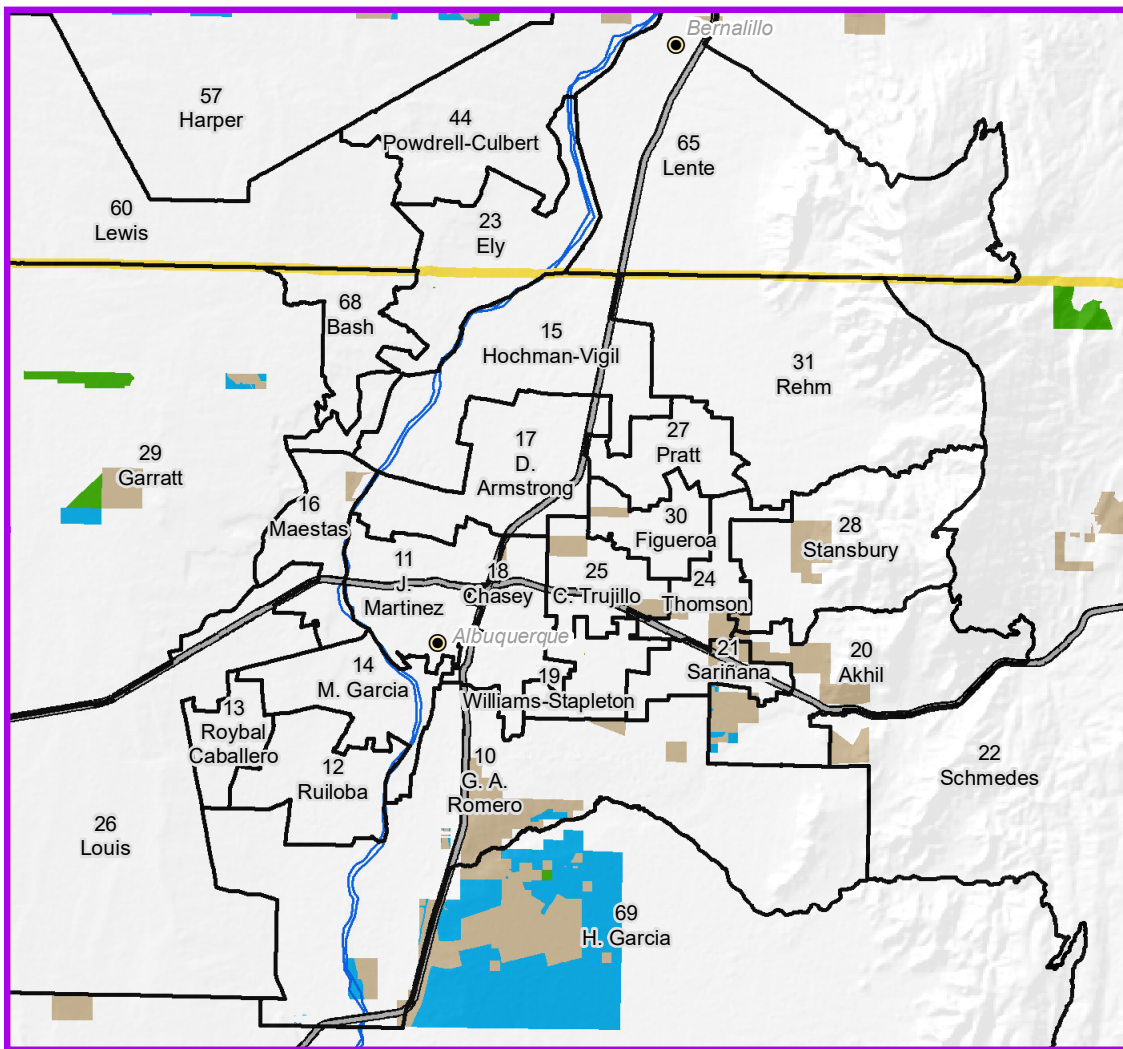


Stephanie Garcia Richard
 Commissioner of Public Lands
 505-827-5761 www.nmstatelands.org

The New Mexico State Land Office assumes no responsibility or liability for, or in connection with, the accuracy, reliability or use of the information provided herein, with respect to State Land Office data or data from other sources. Data pertaining to New Mexico State Trust Lands are provisional and subject to revision, and do not constitute an official record of title. Official records may be reviewed at the New Mexico State Land Office in Santa Fe, New Mexico.

Compiled, edited and printed by the Land Office Geographic Information Center.
 V:\LOGIC\GIS SHARED\NMLegisDist\HouseDist\Tabloid\2019BackPage.
 Save Date: January 28, 2019 Print Date: January 30, 2019.
 Created by: Eleanore Nestlerode enestlerode@slo.state.nm.us 505-827-5735

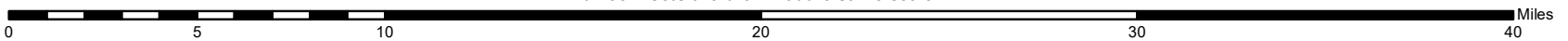
Albuquerque Inset



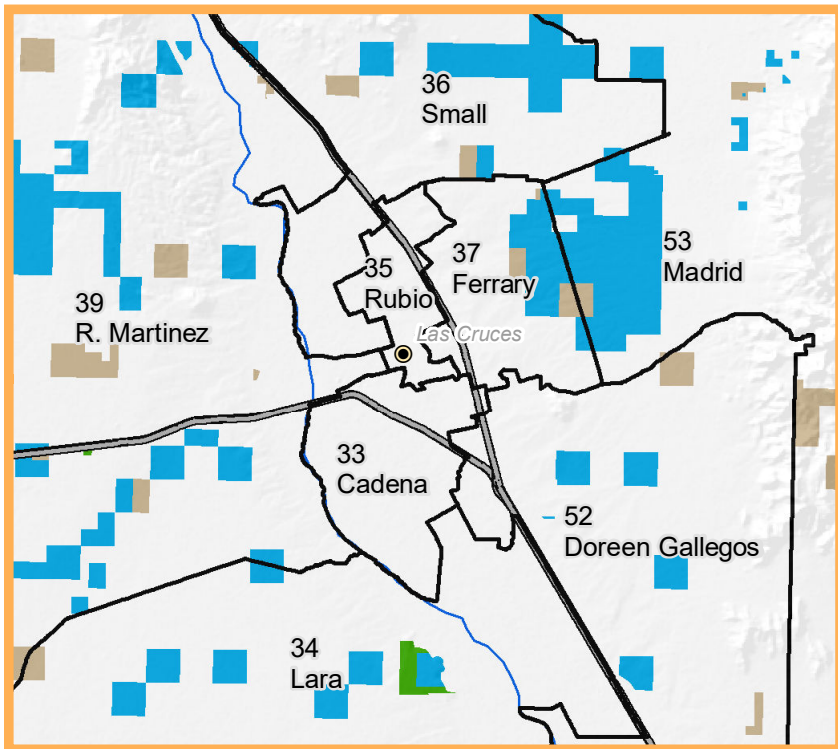
Legend

- | | |
|-------------------|--------------|
| State Trust Lands | County Seats |
| Subsurface Estate | Major Rivers |
| Surface Estate | Interstates |
| Both Estates | County Lines |

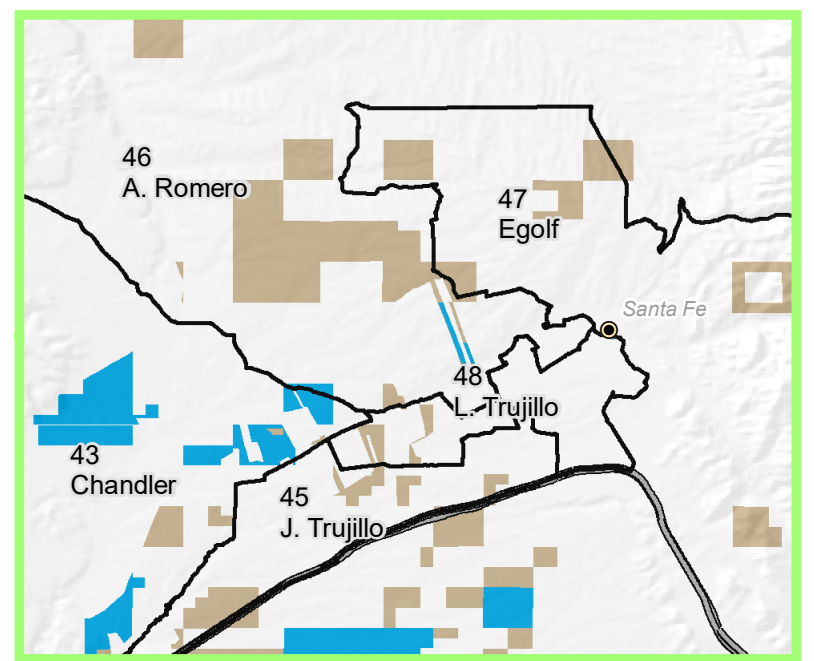
All three insets are drawn at the same scale.



Las Cruces Inset



Santa Fe Inset



List of State Representatives, 2019 Regular Session

- | | | |
|--------------------------------------|--|--------------------------------|
| 1. Rodney Montoya (R) | 24. Elizabeth L. Thomson (D) | 47. Brian F. Egolf, Jr. (D) |
| 2. James R.J. Strickler (R) | 25. Christine Trujillo (D) | 48. Linda M. Trujillo (D) |
| 3. Paul C. Bandy (R) | 26. Georgene Louis (D) | 49. Gail Armstrong (R) |
| 4. Anthony Allison (D) | 27. William B. Pratt (D) | 50. Matthew McQueen (D) |
| 5. D. Wonda Johnson (D) | 28. Melanie Ann Stansbury (D) | 51. Rachel A. Black (R) |
| 6. Eliseo Lee Alcon (D) | 29. Joy I. Garratt (D) | 52. Doreen Ybarra Gallegos (D) |
| 7. Kelly K. Fajardo (R) | 30. Natalie Figueroa (D) | 53. Willie A. Madrid (D) |
| 8. Alonzo D. Baldonado (R) | 31. William R. "Bill" Rehm (R) | 54. James G. Townsend (R) |
| 9. Patricia A. Lundstrom (D) | 32. Candie D. Sweetser (D) | 55. Cathrynn N. Brown (R) |
| 10. G. Andres Romero (D) | 33. Micaela Lara Cadena (D) | 56. Zach J. Cook (R) |
| 11. Javier I. Martinez (D) | 34. Raymundo Lara (D) | 57. Jason Carl Harper (R) |
| 12. Patricio Ruiloba (D) | 35. Angelica Rubio (D) | 58. Candy Spence Ezzell (R) |
| 13. Patricia A. Roybal Caballero (D) | 36. Nathan P. Small (D) | 59. Greg Nibert (R) |
| 14. Miguel P. Garcia (D) | 37. Joanne J. Ferrary (D) | 60. Timothy Dwight Lewis (R) |
| 15. Dayan M. Hochman-Vigil (D) | 38. Rebecca L. Dow (R) | 61. David M. Gallegos (R) |
| 16. Antonio "Moe" Maestas (D) | 39. Rodolpho S. Martinez (R) | 62. Larry R. Scott (R) |
| 17. Deborah A. Armstrong (D) | 40. Joseph L. Sanchez (D) | 63. Martin R. Zamora (R) |
| 18. Gail Chasey (D) | 41. Susan K. Herrera (D) | 64. Randal S. Crowder (R) |
| 19. Sheryl M. Williams-Stapleton (D) | 42. Roberto Jesse "Bobby" Gonzales (D) | 65. Derrick J. Lente (R) |
| 20. Abbas A. Akhil (D) | 43. Christine Chandler (D) | 66. Phelps Anderson (R) |
| 21. Debra Marie Sariñana (D) | 44. Jane E. Powdrell-Culbert (R) | 67. Jackey O. Chatfield (R) |
| 22. Gregg W. Schmedes (D) | 45. Jim R. Trujillo (D) | 68. Karen C. Bash (D) |
| 23. Damon B. Ely (D) | 46. Andrea Romero (D) | 69. Harry Garcia (D) |
| | | 70. Tomas E. Salazar (D) |