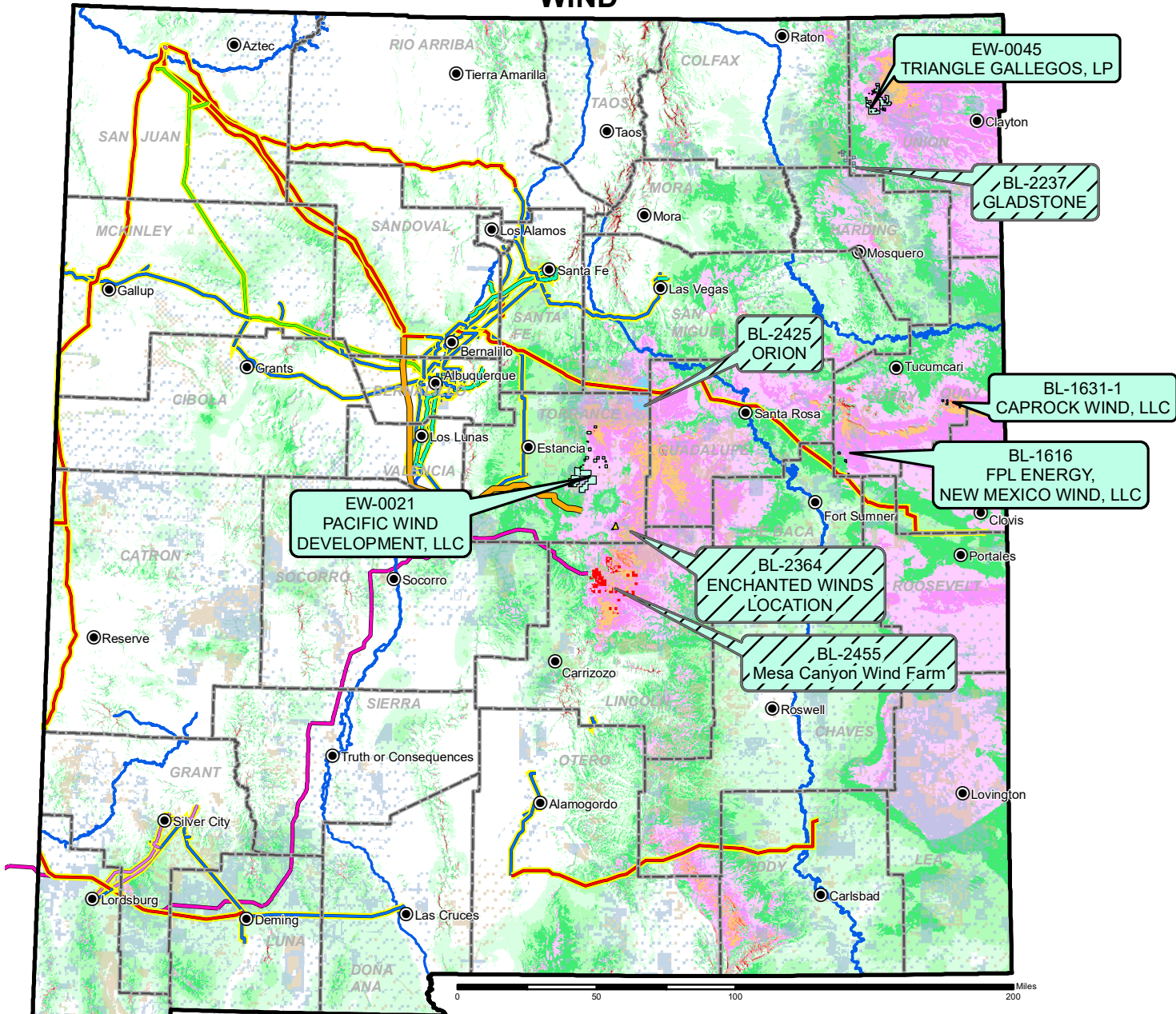


Renewable Energies Leasing on State Trust Lands

WIND



New Mexico
State Land Office
505-827-5761
www.nmstatelands.org

- County Seats
- ~ Rivers
- Active Wind Leases
- Active Wind Lease Applications
- County Boundaries
- Department of Defense
- State Trust Lands**
 - Subsurface Estate
 - Surface Estate
 - Both Estates

- Legend**
- SunZia Proposed Transmission Line
 - Western Spirit Proposed Transmission Line
 - PNM Transmission Lines**
 - 46 kV
 - 69 kV
 - 115 kV
 - 230 kV
 - 345 kV

Mean Speed at 50 m

mph	m/s
< 12.3	< 5.5
12.3 - 13.4	5.5 - 6.0
13.4 - 14.5	6.0 - 6.5
14.5 - 15.7	6.5 - 7.0
15.7 - 16.8	7.0 - 7.5
16.8 - 17.9	7.5 - 8.0
17.9 - 19.0	8.0 - 8.5
19.0 - 20.1	8.5 - 9.0
20.1 - 21.3	9.0 - 9.5
> 21.3	> 9.5

The New Mexico State Land Office assumes no responsibility or liability for, or in connection with, the accuracy, reliability or use of the information provided herein, with respect to State Land Office data or data from other sources. Data pertaining to New Mexico State Trust Lands are provisional and subject to revision, and do not constitute an official record of title. Official records may be reviewed at the New Mexico State Land Office in Santa Fe, New Mexico. Compiled, edited and printed by the Land Office Geographic Information Center. V:\Commercial\Wind\RENEWABLE_ENERGIES_Wind_2017_Letter. Save Date: March 30, 2017 Print Date: March 30, 2017. Created by: Eleanore Nestlerode, Land Office Geographic Information Center 505-827-5727