



Aubrey Dunn, State Land Commissioner
State of New Mexico

FOR IMMEDIATE RELEASE

May 17, 2017

Contact:

Kristin Haase, Assistant Commissioner for Communications

(505) 827-5762 (O)

(505) 699-1276 (C)

khaase@slo.state.nm.us

State Land Commissioner Aubrey Dunn Opens New Access Points and Campsites to Sportsmen

SANTA FE, NM – In an effort to improve the sportsman experience on New Mexico State Trust Lands, State Land Commissioner Aubrey Dunn today announced the addition of 141 new access points in 14 counties and two new campsites near Carlsbad.

“Land ownership patterns in New Mexico tend to lock sportsmen out, but as promised I have been working with our lessees to create a more open and positive experience for hunters and anglers,” said Commissioner Dunn. “Hunting is deeply rooted in our cultural heritage and my office is doing all we can to preserve these traditions.”

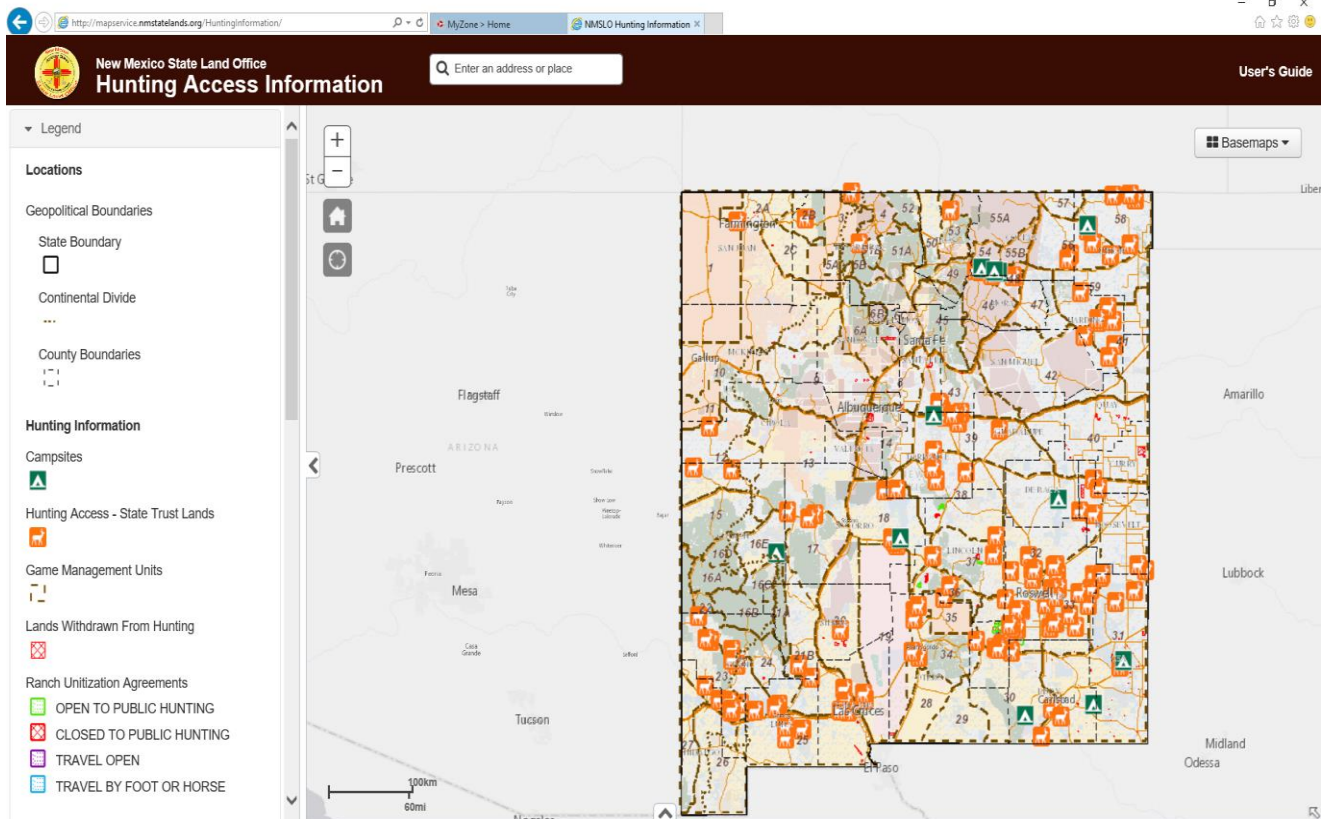
Nearly all of the nine million acres of surface estate managed by Commissioner Dunn and the State Land Office are leased for livestock grazing and cropland production, and during New Mexico’s hunting season are open to hunters, anglers, and trappers with a valid license and all applicable permits, stamps or validations.

Of the new access points, 124 are open to walk-ins and 17 are accessible by vehicle. In all, there are now 345 access points and 11 campsites on State Trust Lands.

The State Land Office is partnering with the state Department of Game and Fish and the Bureau of Land Management to offer mobile maps of New Mexico’s big-game hunting units, hunting access points, and more through the “CarryMap” application.

This application allows users to store hunting unit maps on their mobile devices and access them regardless of cellular coverage. Access <https://www.blm.gov/nm/huntingmaps/> for instructions to download the app.

The following map identifies access points and campsites located on State Trust Lands and can be viewed at <http://mapservice.nmstatelands.org/HuntingInformation/>.



Oil, gas, and mineral production, ranching and farming, and commercial development on State Trust Lands support public schools, seven universities, New Mexico Military Institute, New Mexico School for the Deaf, New Mexico School for the Blind and Visually Impaired, three hospitals, correctional facilities, water conservation projects, and public building construction and repair.